



PROSPECTUS

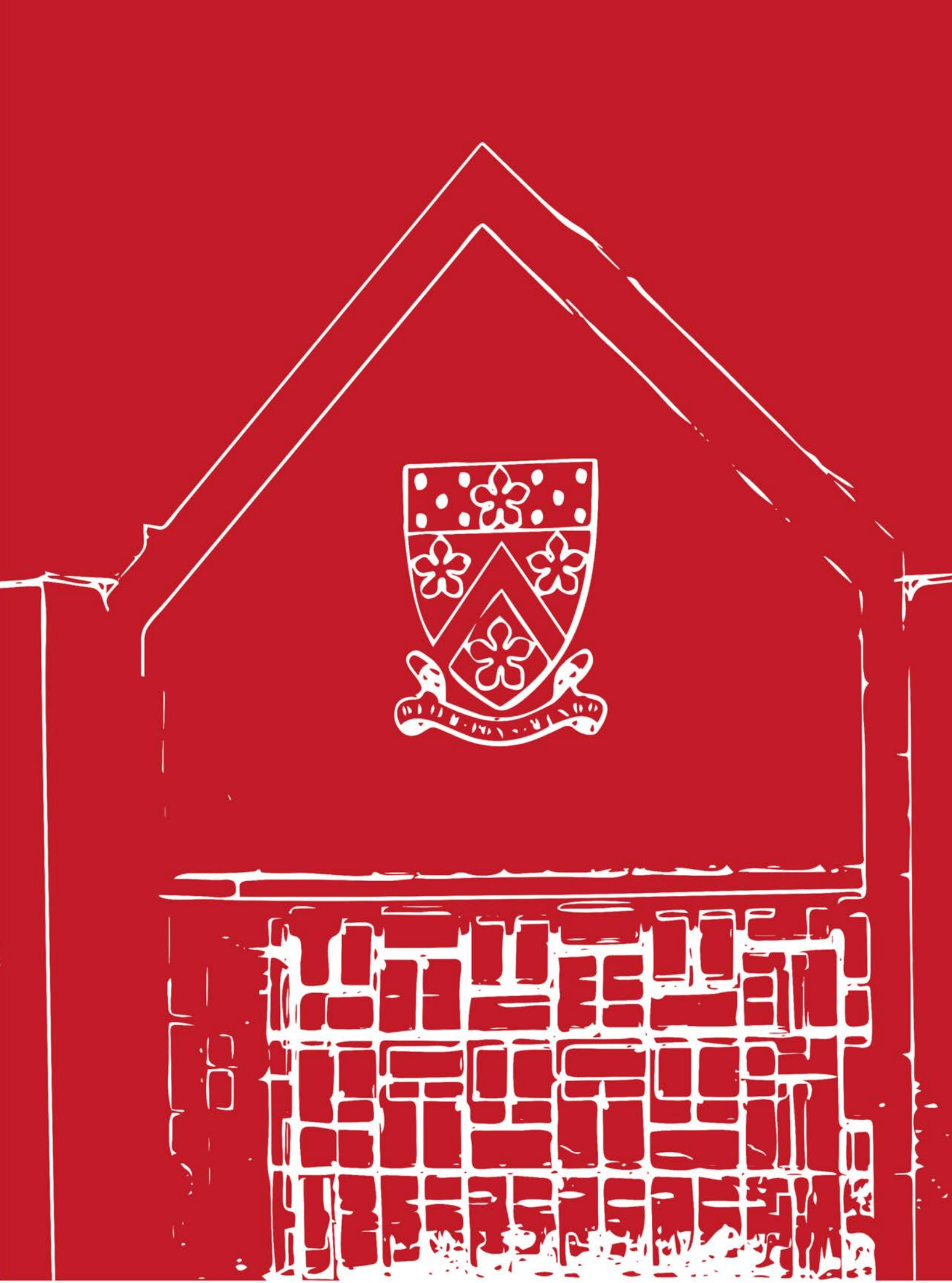
走进德威

**GRADUATE
WORLDWIDE.**



2019-2020





Dulwich International High School Suzhou

苏州德威国际高中

PROSPECTUS

走进德威



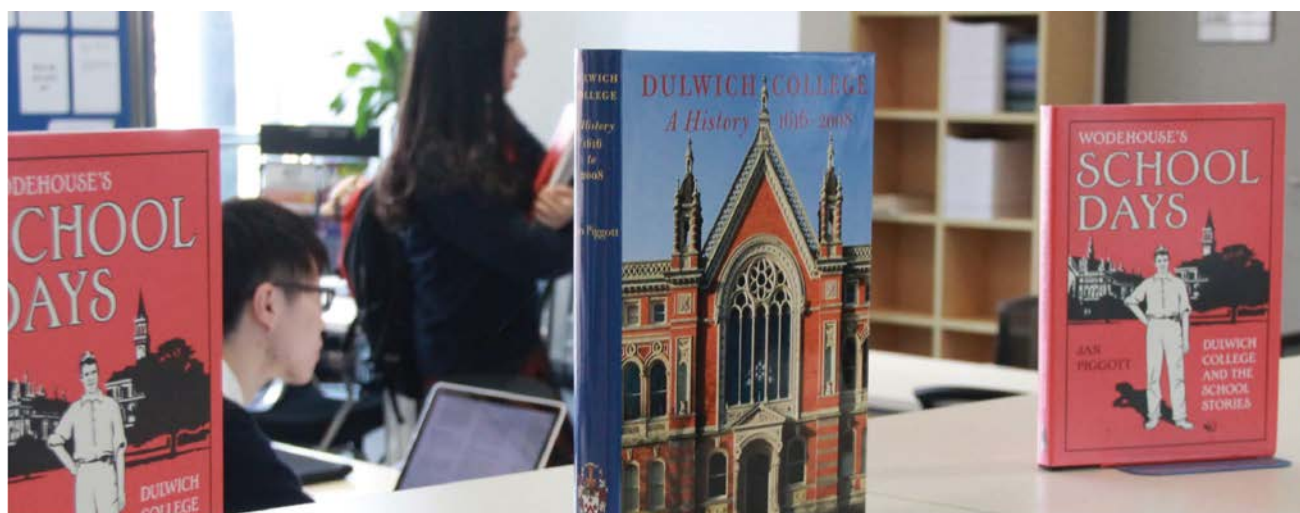
2019 - 2020

GRADUATE WORLDWIDE.

Contents

内容

- | | | | |
|----|---------------------------------------|----|---|
| 6 | From Our Director
总监寄语 | 24 | Beyond the Classroom
课堂延伸 |
| 8 | Dulwich Our Heritage
德威渊源与传统 | 25 | - Co-Curricular Activities
联课活动与实践 |
| 10 | Why Choose DHSZ ?
为何选择苏州德威国际高中? | 27 | - Dulwich Inter-School Events
德威校际特色活动 |
| 10 | - Dulwich Core Values
德威核心价值 | 28 | Pastoral Care and Wellbeing
德育关怀与身心健康 |
| 11 | - Dulwich Unique Advantages
德威独特优势 | 30 | Boarding
寄宿管理 |
| 12 | Our Campus – Facilities
我们的校园 - 设施 | 32 | University Counselling
大学升学指导 |
| 14 | Academics
学术 | 34 | Our Successes
我们的成功 |
| 15 | - Progression Through DHSZ
课程路径 | 38 | - University Matriculations
大学录取佳绩 |
| 22 | - Teachers
师资力量 | 42 | Admissions
入学申请 |





From Our Director

总监寄语

6

We look forward to welcoming you and your child to being a part of the Dulwich family.

诚挚的期待您和您的孩子加入德威大家庭。

It is my pleasure to introduce you to our outstanding school. It is our hope that within the pages of this booklet you will find the reasons why Dulwich International High School Suzhou should be your first choice of education for your son or daughter. Our school is firmly guided by our vision statement which commits us to not only ensuring students make it into their best fit university, but that they are well-prepared to thrive and succeed when they get there.

Development of our students covers a number of areas. First and foremost, students need to achieve excellent grades. We are uncompromising in our commitment to academic standards and it is our highest priority that students are appropriately challenged intellectually. We believe that the key to making this happen is the recruitment and retention of outstanding staff. We recruit the best staff from native English speaking countries around the world, who are all experts in their subject area. Their own educational backgrounds, academic qualifications and teaching certificates all ensure that your child is being taught by the best teachers available. Teachers at Dulwich International High School Suzhou are passionate about their subject, passionate about young people and passionate about ensuring our students succeed.

Development of students must also happen outside the classroom. Western universities are looking for more than just outstanding exam grades. They want students who can contribute to, and fit in with campus life and they want students who can show an interest in, and a passion for something bigger than themselves. To this end we offer a wide array of Co-curricular activities for students to participate in that allow students to develop the skills and attributes that universities are looking for. Our connection to the Dulwich College family of schools ensures that our Co-curricular programme is of the highest quality.

We also believe that through knowing and caring for our students, we not only ensure that our school is a place they want to be, but that we also equip our students with good coping strategies and with the social skills they will need to live well in the world outside school. Our well-designed pastoral programme means that in today's quickly changing world, the characteristics of adaptability; confidence; imaginative problem solving; perseverance and empathy are well embedded for our students.

Gaining access to the world's leading universities, and succeeding when there, is also determined by the acquisition of outstanding English language ability. Here at Dulwich International High School Suzhou we ensure this happens. All lessons are taught in English by our native speaking staff. Students are expected to fully participate in our English language environment and are given many different opportunities to ensure that they become confident communicators in all mediums of English.

By enrolling at Dulwich International High School Suzhou your son or daughter is committing themselves to a demanding, but rewarding and fulfilling time for their high school years. Their time at our school will allow them to fulfill their potential and go on to succeed in an overseas university. Whether that university is in America, the UK or anywhere else in the world, we have a proven track record of placing students in the world's leading institutions. This booklet will show you how being part of the Dulwich College International network sets our students apart from the rest and gives them an edge in being admitted to a world class university.

我很荣幸地向您介绍我们出色的学校！希望此宣传册能够帮助您了解为什么苏州德威国际高中应当成为您孩子教育的首选。在我校愿景的坚定指导下，我们不仅要保证学生能够申请到最适合他们的大学，并且让他们对大学生活做好充分的准备，信心满满，憧憬未来。

在我校，学生将得到全方位的发展。其中，重中之重是要求学生取得优异的成绩。我校坚持于学术的高标准并努力让学生在学业上接受挑战，勇攀高峰。为保证教学质量，优异的师资力量是关键；我校只从世界各地的英语为母语的国家聘用最优秀的老师，他们都是其学科领域的精英。各位老师的教育背景、学历证书以及教学认证都是确保您孩子受教于最好老师的有力证据。在我校，每位老师都释放着无穷的热情，精于其业，循循善诱，从而指导学生取得成功。

世界名校对学生的要求不仅仅是能够取得优秀的考试成绩，学生是否能够完全融入到校园生活并对丰富校园生活做出一定的贡献，成功的开发并展示自己的个人兴趣与技能同样是各个知名学府所关注的。因此，学生在我校的发展不会只在课堂中体现，校内所提供的丰富多样的联课活动项目旨在为各位学生发展必备的技能，从而为申请自己心仪的大学加分。我校与大德威社区里各个学校的紧密联系确保了我校联课活动项目的质量一直保持在最高水平。

我校的德育管理计划旨在培养学生不仅在学校、乃至世界的任何地方，都能具备良好的问题解决能力、应对策略和社会技能，并能够在瞬息万变的世界里更快的适应社会，更富有创造性的处理问题，更坚持不懈的做事而且更富有同理心。与此同时，我校力求深入了解学生，照顾学生，努力打造学生理想的学术殿堂。

能够进入到世界一流大学进行深造，并在大学里取得成功，同样取决于优异的英语语言能力。在苏州德威国际高中，所有课程均为全英文教授，老师皆为英语为母语的老师。我校期望在校学生能够积极的融入到我校的英语环境中，我校也致力于为学生创造不同的机会，以确保他们能够用英语自信交流，侃侃而谈。

通过在苏州德威国际高中就读，您的孩子会度过一个高要求、高回报、高质量的高中生活。他们在学校里能够充分发挥潜力，并继续在海外大学取得成功。不论是英国、美国还是世界上的其他任何地方的顶级学府，都有我校毕业生活跃的身影。本宣传册将向您展示如何让您的孩子成为大德威社区学校中的一员并发掘自己独一无二的潜能，从而进入到世界一流的学府。

Dulwich Our Heritage 德威渊源与传统

8



Dulwich College is one of the UK's oldest independent schools, founded in South London as a boys' school in 1619. Dulwich College International (DCI) was established to bring the Dulwich education to students around the world and is now one of the fastest growing UK independent school networks. Through DCI, Dulwich College has been in Asia for over ten years, building bridges between Eastern and Western communities and delivering high academic results and a well-rounded education.

德威公学是英国最古老的私立男子学校之一，1619 年始创于伦敦南部。德威教育集团（DCI）的成立，将德威教育的办学理念延伸至全球。如今，德威已成为发展最快的英国独立学校集团之一。通过德威教育集团，德威学校已经在亚洲成功办学十多年，我们的教育以追求卓越的学术成果和全面发展的个体著称，在东西方的社区间架设起沟通的桥梁。

At Dulwich (College International) we believe an education must go beyond books, bricks and mortar to build a bridge to tomorrow's world. We are creating the best schools in the world so our students graduate worldwide.

在德威（国际教育集团），我们坚信教育须超越书本，跨越校园，架设通往世界之桥梁。我们致力于创建世界上最好的学校，一个遍布全球的学校大家庭，让我们的毕业生能心怀世界，智胜全球。

DCI has a 100-year exclusive partnership with the prestigious Dulwich College to expand the Dulwich network in Asia and around the world. We are directly licensed and academically supervised by Dulwich College and enjoy a close and productive partnership with the College. We are also inspected annually by the Deputy Headmaster of Dulwich College to ensure that we comply fully with their high standards.

Dulwich International High School Suzhou (DHSZ), with a current enrolment of approximately 750 students, was founded in 2012 as a means for Chinese national students to have the opportunity to study a rigorous international curriculum based upon the Dulwich College London educational philosophy. DHSZ is part of a network of schools owned and managed by Dulwich College International (DCI), which is based in Shanghai. The DCI group of schools currently comprises eight international schools in China and Asia, two high schools and one sister school. Dulwich College Shanghai, which opened in 2003, was the first DCI school and is now one of the top private schools in Shanghai, with a reputation for outstanding excellence. Following the resounding success of that school, DCI started similarly successful schools in Beijing, Suzhou, Zhuhai, Seoul, Singapore and Yangon.

The close collaboration among our colleges stimulates innovation and encourages an international outlook, which we believe provides students an advantage in the future they will face. The result is a community where academic ability is nourished, creativity is valued, diversity is celebrated and inspiration is paramount.

DCI 和伦敦德威公学签署了百年独家合作协议，计划在亚洲和全球各地扩展德威教育网络。我校的开办经由伦敦德威公学许可，并在学术上接受其督导。我校与伦敦德威公学关系紧密，伦敦德威公学副校长每年来我校访问检查，确保我校按照德威高标准运作。

苏州德威国际高中，目前在读学生为 750 名左右，成立于 2012 年。秉承英国德威公学的教育理念，为中国学生提供学习一种严谨的国际课程机会。我校隶属上海德威管理集团（DCI），是该集团管理的多所学校之一。DCI 目前在中国和亚洲各地共开办了八所国际学校，两所国际高中和一所姐妹学校。上海德威英国国际学校于 2003 年开办，是德威管理集团开办的第一所学校，现已成为沪上顶尖的私立学校之一，成绩杰出，声誉斐然。在这所学校取得良好的社会反响之后，德威管理集团在北京、苏州、珠海、首尔、新加坡和仰光开办的多所学校相继取得成功。

德威国际学校之间的紧密合作，促进和激励了创新精神和全球视野的培养，使学生在面对未来的挑战时更具优势。这种校际合作也打造出一个鼓励学术研究、重视创造能力、崇尚启发和拥抱多元化的社区。

GRADUATE WORLDWIDE.



WHY CHOOSE DHSZ?

为何选择苏州德威国际高中

10



**Dulwich Core
Values**
德威核心价值

Dulwich Unique Advantages

德威独特优势

As the only Western owned and managed international curriculum high school in Suzhou, we are uniquely positioned to offer the most authentic education and experience for students.

作为苏州唯一一家由外方运营并管理的国际课程高中，我校致力于为学生提供最纯正的国际教育和最独特的成长体验。

1. A broad and balanced curriculum with a holistic approach to teaching and learning
课程广泛均衡，注重全面发展
2. An extensive co-curricular programme that develops skills and abilities outside the classroom
联课活动丰富，培养课外技能
3. Outstanding academic achievement that enables success at the world's leading universities
学术成就卓越，确保升学成功
4. Highly qualified and experienced international educators who are experts in their subject areas
师资专业精良，纯正国际教育
5. Each student is known to and cared for by supportive and helpful staff
注重个体成长，提供全面关怀
6. Outstanding opportunities through the Dulwich family of schools to engage with an international learning-focussed community
集团资源丰富，共享多元交流
7. Students become confident and engaging communicators, with authenticity and a clear purpose
学生积极自信，沟通技巧娴熟
8. The development of a pioneering spirit incorporating the integration of technology
科技融于教学，鼓励开拓创新





Our Campus 我们的校园

A group of six female students in school uniforms (dark blue blazers, red ties, and red plaid skirts) are walking along a path in front of a large, modern brick building with large glass windows. A tree stands to the right of the path, and a white directional signpost with multiple arrows pointing in different directions is visible on the far right. The scene is bright and sunny.

Campus Facilities

校园设施

Dulwich International High School Suzhou is situated in Suzhou Industrial Park on a shared campus with our sister school, Dulwich College Suzhou. With shared co-curricular activities (CCA), competitions and social functions, our students have many opportunities to meet with the international students and learn from each other's cultures.

The campus facilities provide our students with access to a wide range of educational resources and an excellent environment for learning. Completed in 2015, the teaching building offers over 17,000 square meters of purpose built teaching facilities with smart technology, centralized air conditioning and air filtration systems throughout to ensure the best possible learning environment. Our campus enables a wide range of courses and activities, including science labs custom designed to maximise student engagement in their course material, a library, a black box theatre, music practice rooms, sport facilities (including all-weather pitches, basketball and tennis courts, access to a full size athletics track and a 25m, 8 lane swimming pool). Our dining-hall (offering a variety of both Chinese and western cuisine), coffee shop, roof garden, medical centre and of course our boarding houses add to the many excellent facilities on offer for our students to support their academic study and maximise every CCA opportunity.

我校位于苏州工业园区，与我们的姐妹学校——苏州德威英国国际学校共享校园。在联课活动、比赛和社交上，我们的学生有很多机会与国际学生见面，互相学习对方的文化。

校园设施为我们的学生提供了广泛的教育资源和良好的学习环境。教学楼于2015年建成，占地17000平方米，提供专业的智能设备、中央空调以及空气过滤系统，以确保最佳的学习环境。我们的校园提供丰富的课程和活动，包括旨在最大限度地让学生参与课程材料的科学实验室，图书馆，黑匣子剧院，音乐练习室，体育设施（包括室内外篮球场，足球场，网球场，田径跑道以及一个25米，8条泳道的游泳池）等等。



Academics 学术

14

The Dulwich International High School Suzhou curriculum has been designed to enable your child to achieve his or her future educational aspirations.

德威国际高中设计的课程旨在帮助您孩子实现他们对未来教育的期望与目标。

Our integrated programme of both internally designed and externally examined courses provides both content knowledge and also develops the skills and language required to successfully build a bridge to international higher education at prestigious institutions. For the externally assessed component, we offer a suite of IGCSEs and A Levels administered by the Cambridge Assessment, a department of the University of Cambridge, and Edexcel, the world's largest education company. The internal courses, unique to Dulwich, have been carefully customised based on both the current and future needs and interests of all of our students. These courses serve not only to complement the formally examined courses, but also to foster study and life skills which are not covered in the IGCSE and A Level syllabi. Skills covered are based on what universities and employers tell us are important, including areas such as critical thinking, complex problem solving, collaborative working and creativity.

我校课程结合了内部设计与外部评估要求，既提供学生以课程知识，亦发展他们未来在享有盛誉的国际高等教育中取得成功所需具备的专业学科技能和语言水平。作为外部评估的组成部分，我校学生参加由剑桥大学考试委员会及爱德思组织的 IGCSE 与 A Level 全球统考。作为德威独家设计的内部课程，其定制基础为目前及未来学生所需与兴趣所在。这些课程不仅是对 IGCSE 和 A Level 课程体系的补充，更培养了学生的学习与生活技能。所涵盖的技能基于大学和雇主告诉我们的的重要性，包括批判性思维，复杂问题解决，合作工作和创造力等领域。

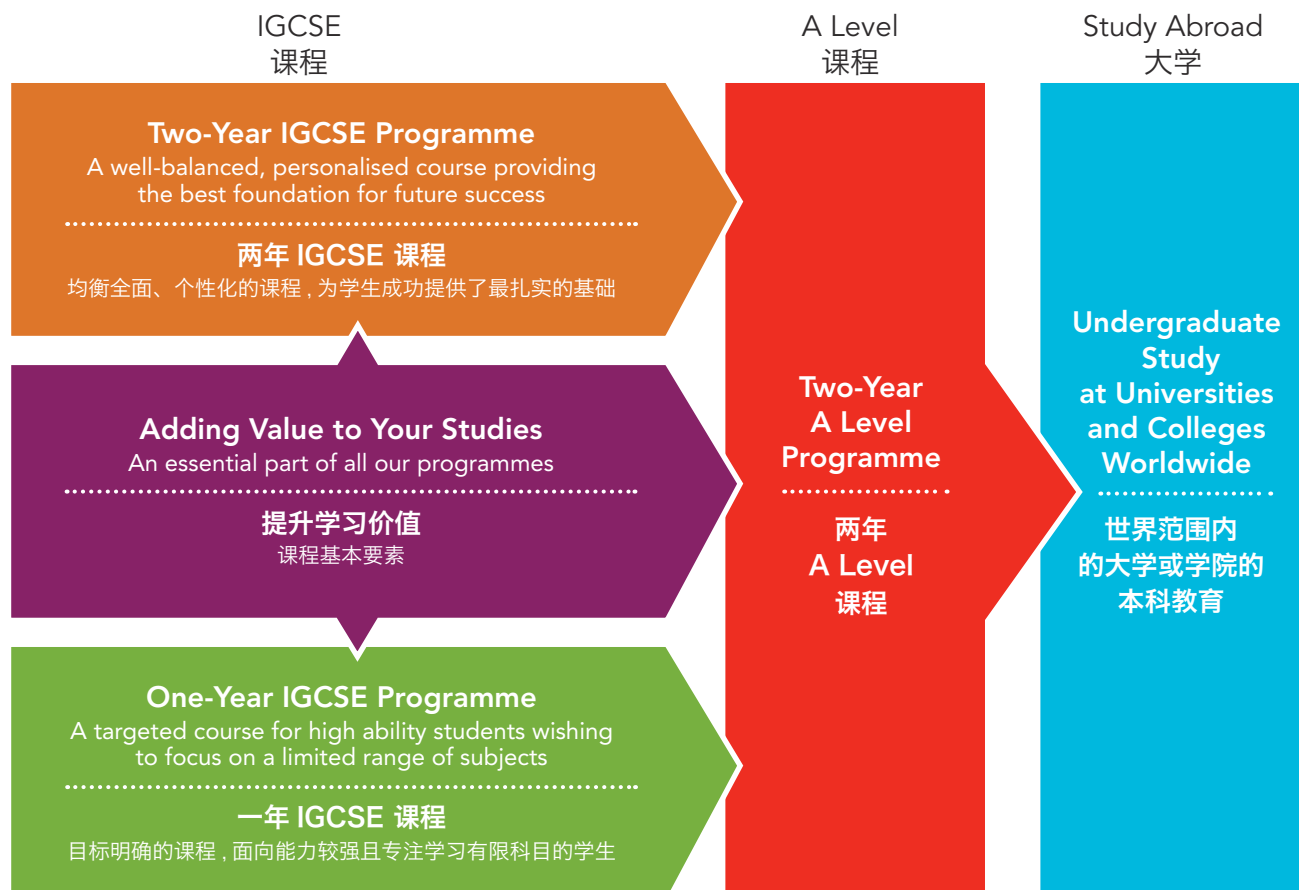
We deliver an academically rigorous, challenging and rewarding academic curriculum for students between the ages of 14 and 19 who are planning to attend a university outside China when they finish school. The curriculum we offer is valued and accepted by universities in countries around the world, especially in the U.K., Australia, Canada and the U.S.

我校为 14-19 岁的学生提供既富挑战性又极具价值且学术严谨的 IGCSE 和 A Level 课程。该课程为包括美国、英国、加拿大和澳大利亚等国家的大学本科教育打下夯实的基础。



Progression Through DHSZ 课程路径

15





16



We offer both a one-year and a two-year IGCSE programme, but it is our strong recommendation that students complete the full two-year programme because it establishes a much better foundation for the demanding A Level programme that follows and it also gives students time to develop and consolidate the sound English language skills that are so vital for academic success at A Level and in their university studies thereafter.

IGCSE 阶段的学习为学生之后的 A Level 学习奠定学术基础。该准备课程设有一年制和两年制两种选择。两年的 IGCSE 课程能为学生进入更具难度的 A Level 课程打好坚实的基础，同时也让学生有充足的时间巩固和提升他们的英语水平，人际交往能力以及发现并充分发挥自己的兴趣爱好和潜能。

请扫描以下二维码下载 IGCSE 课程手册：

Please scan the QR code below to download IGCSE booklet:



MAIN DIFFERENCES BETWEEN THE IGCSE PROGRAMMES: 两年制课程和一年制课程的主要区别

	THE TWO - YEAR PROGRAMME 两年制课程	THE ONE - YEAR PROGRAMME 一年制课程
	<p>A well-balanced, personalised course providing the best foundation for future success</p> <p>‘为学生未来成功奠定基础的均衡全面、多样性及个性化的课程’</p>	<p>A targeted course for high ability students wishing to focus on a limited range of subjects</p> <p>‘针对目标清晰、专注学习指定科目且学习能力较强的学生所开设的固定课程’</p>
English & Maths 英语和数学	<p>Additional time is used to build a strong foundation and extend more able students; setting enables more targeted teaching</p> <p>有充足的时间提高能力，打好坚实的学科基础；课程设置更有利于在教学时因材施教，有的放矢</p>	<p>All students follow the same courses</p> <p>所有的学生学习同样的课程</p>
Science 科学	<p>Science Foundations followed by 2 or 3 from: Biology, Chemistry and Physics</p> <p>学习基础科学之后，可以在生物、化学和物理三门学科中选择两门或三门科目继续学习</p>	<p>Chemistry and Physics</p> <p>化学和物理</p>
Options 选修课程	<p>Choose 2 from: Art, Economics, Geography, Computing, Music, Spanish and Liberal Arts</p> <p>可以从艺术、经济学、地理、计算机技术、音乐、西班牙语及人文社科综合中选择两门作为选修</p>	<p>Economics</p> <p>经济学</p>
Chinese 中文	<p>First Language / Second Language Chinese</p> <p>中文作为第一语言和中文作为第二语言两门学科</p>	<p>Not studied</p> <p>该课程不学中文</p>
Number of IGCSEs IGCSE 学科数量	<p>7-9</p> <p>7-9 门学科</p>	<p>5</p> <p>5 门学科</p>
Adding Value 提升学习价值	<p>Drama, Lifeskills, PE, CCAs and International Award</p> <p>戏剧、生活技能、体育、联课活动和国际奖项</p>	<p>Drama, Lifeskills, PE, CCAs and International Award</p> <p>戏剧、生活技能、体育、联课活动和国际奖项</p>
Potential Majors 未来可选择的专业	<p>Any, including Maths, Science and Engineering</p> <p>任何专业，包括数学、科学、工程专业</p>	<p>Best suited to Mathematics, Sciences and Engineering</p> <p>最适合学习数学、科学和工程专业</p>



International Schools Choral Music Society 11th Anniversary Gala Concert 2018 国际学校合唱音乐协会十一周年庆典音乐会

HOSTED BY:

DULWICH COLLEGE SUZHOU

DULWICH INTERNATIONAL
HIGH SCHOOL SUZHOU



18

Visual and Performing Arts 视觉与表演艺术

The visual and performing arts have a special place at DHSZ because they include the practical subjects that give students an expressive and creative balance to their literary, scientific and humanities studies. Many of our students have considerable talent in one or more of these subjects. Visual and performing arts include the three disciplines – Art, Drama and Music- that give students opportunities to use their imaginative faculties to explore and develop their creative skills. These subjects encourage students' personal expression, self-awareness, poise, sensitivity, conceptual thinking, powers of observation, and analytical abilities. Students gain confidence in performance and public speech through Drama which is taken by every student in the school. Drama is not an examination subject. We offer examination courses in music and art. Music supports students in playing their musical instruments, singing and creating original musical compositions, as well as learning about the history and appreciation of music; while Art develops students' skills in a range of media through drawing, painting, sculpture, textiles and printmaking. The three departments contribute actively to whole school events, like co-curricular activities, assemblies, performance corner and art exhibitions., and collaborate in producing some inter-disciplinary activities and performances during the school year that are enjoyed by all members of our community.

视觉与表演艺术在苏州德威国际高中有着举足轻重的意义，通过实践，学生将文理科所学以充满创造力并借由特定的表达方式收获学科之间的平衡。我校的许多学生拥有一种或多种才能。视觉与表演艺术汇集了三个学科的协同能量—艺术、戏剧与音乐，学生将有机会运用想象力探索与提升创造才能。这三个学科鼓励学生表达自己，认识自我，渐获稳重，洞察力，概念性思维，观察能力和分析能力。戏剧可以让学生在表演和演讲上增强自信，但戏剧非考试科目。音乐则帮助学生提升乐器演奏、歌曲演唱、音乐作品原创上的技能，同时学生还将学习乐史与音乐鉴赏。艺术开发学生在绘画、雕塑、版画和纺织品等一系列介质上的创造能力。音乐与艺术为考试学科。视觉与表演艺术为我联课活动、学生大会、校园表演角及艺术展贡献了诸多力量。经由它的跨学科合作，我校全年的表演活动精彩纷呈。深受全校师生的喜爱。





19

"Visual and Performing Arts provides a stage or an opportunity for us to show our talent, and more importantly it develops students confidence, creativity and collaboration skills that will benefit us for our entire life."

- Student

"视觉和表演艺术，为我们提供了一个很好的舞台和机会去展示才能。更重要的是，它能够培养我们的信心、创造力和协作能力，而这些技能将会让我们终生受益。"

— 刘同学





Physical Education at Dulwich

德威体育：为学生计之长远

At Dulwich International High School Suzhou, we believe that physical education is essential to a child's well-being. Students are continuously developing physically and emotionally, and are especially affected by the benefits of activity, and inversely, the negative effects of inactivity.

At Dulwich, every student participates in 80 minutes of PE lessons per week, takes part in a sport-based co-curricular activity once a week and has the option to join a separate sports practice once a week in order to compete against other schools in competitions. Students are also encouraged to make use of our excellent sports facilities such as the fitness suite, basketball courts and the 3G astro-turf football pitch in their spare time.

In PE class, students are exposed to a variety of different sports and activities which are both fun and challenging. Throughout the year, students may play touch-rugby, cricket, hockey, badminton, volleyball, football, basketball or netball. We also offer dance, fitness and athletics. In addition, students take part in systematic fitness training, focusing on 3 components: speed, strength and endurance. They are evaluated throughout the year to measure their progress.

While academic success is undoubtedly very important, in most cases, universities are looking for much more in the students they recruit. PE classes in DHSZ are not only fun, but they help provide the building blocks upon which students can develop into healthy, knowledgeable and sociable adults.

苏州德威国际高中相信体育对于学生的身心健康至关重要。学生正处在身体与情感持续发展的阶段，系统、有效的运动将带给他们很多益处。

在德威，每个学生一周共有 80 分钟的体育课，同时他们还必须参与一周一次的体育联课活动，亦可自由选择参加一周一次额外的体育训练，这一训练是为了学生参加校际间的体育竞技而准备的。在空余时间，学生还被鼓励使用我校优良的体育设施，例如健身房、篮球场和 3G 草皮足球场。

在体育课程中，学生将接触到各种不同类型的运动和有趣且具有挑战性的活动。学生可以体验触式橄榄球、英国板球、曲棍球、羽毛球、排球、足球、篮球和网球。我们还提供舞蹈、健身和体能训练。我校系统性的体能训练专注于三个方面：速度、力量和耐力。贯穿全年，学生将会被评估并被记录相关数值，以此来衡量他们的进步。

在德威，学生取得优异的成绩十分重要，但是大学更注重学生的整体素质。德威的体育课程不仅有趣，而且在帮助学生成长为一个身心健康、知识渊博以及社交能力强的成人道路上铺设了坚实的基石。



Teachers 师资力量

22

We provide expert tuition and are uncompromising in our commitment to academic excellence. We have a multicultural international team of teachers who are carefully selected for their skills, professional knowledge and experience. All our teachers have degrees and teaching qualifications and have graduated from good universities around the world. Many of our teachers hold postgraduate qualifications in their subject specialisms.

Our teachers offer our students excellent subject knowledge, enthusiasm and approachability. They play a key role in helping our students to make a smooth transition into an English language-learning environment. English is the language of instruction and we encourage all our students to speak English, both inside and outside the classroom.

Our teachers also help their students to adapt to a challenging curriculum that promotes active participation and discussion, higher order critical thinking, creative problem solving, teamwork, and self-directed research. Good independent study skills are vital to academic success and our teachers help our students to develop and maintain positive study habits.

我校在确保高质量教学和学术优异性方面一丝不苟并持之以恒。我们的教师是从许多国家经过精挑细选后予以录用，他们除了拥有丰富的专业知识和教学经验之外，还具备许多其他的技能与专长。我们所有的教师都具有专业教学资质，学历都在本科以上。大部分教师拥有硕士、博士学位，并来自于世界各地名校。

我们的教师专业知识渊博，对学生热情友好，平易近人。他们在帮助学生顺利过渡到全英文教学环境中起到至关重要的作用。由于我校使用英语授课，我们鼓励所有学生在课堂及课后用英语进行交流。

此外，我们的教师帮助并引导学生逐步适应具有挑战性的课程，这些课程鼓励学生积极参与课堂活动和各种讨论、激发高层次的判断思考能力与解决问题能力、倡导团队精神和个人研究相结合。独立自主的学习能力是获得学术成就的关键因素，我们的教师会帮助学生培养并保持他们的良好学习习惯。

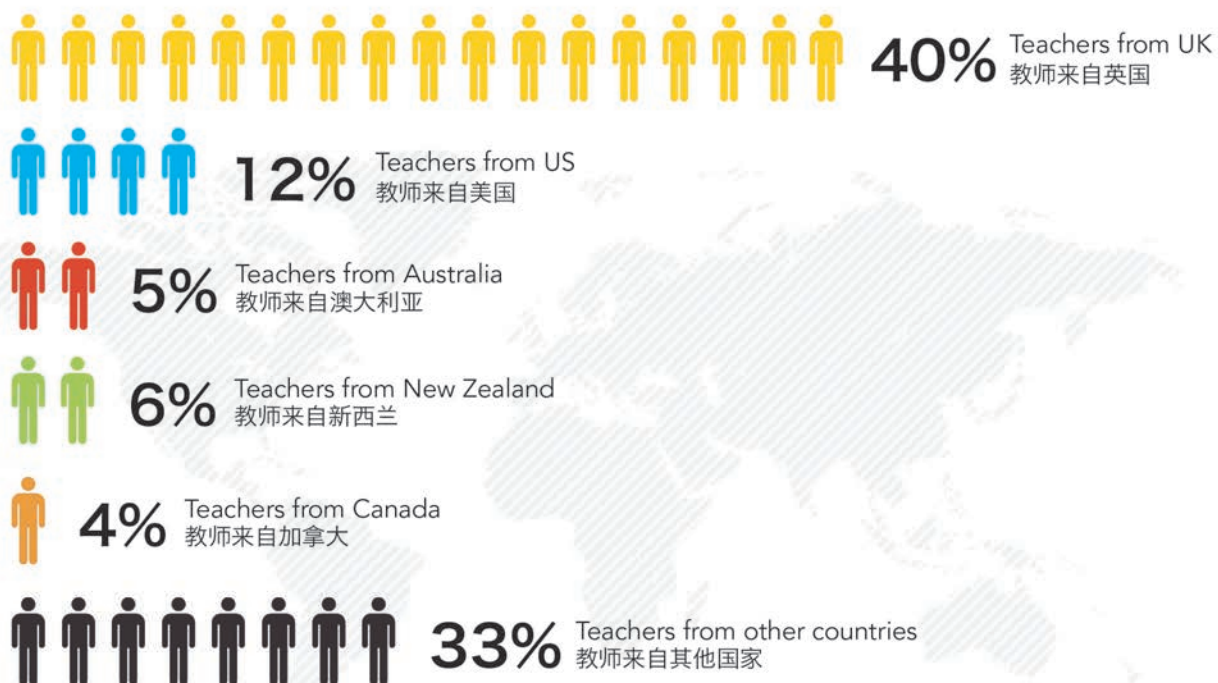




8:1 Student to Teacher Ratio 学生与教师比例 8:1

90% Expat Teaching Staff
外籍教师比例

23



*Columbia, India, Kenya, Phillipines, Portugal, Romania, Singapore, Sri Lanka, Malaysia, Mauritius, South Africa
哥伦比亚、印度、肯尼亚、菲律宾、葡萄牙、罗马尼亚、新加坡、斯里兰卡、马来西亚、毛里求斯、南非

Beyond the Classroom

课堂延伸

24

Whilst academic success is undoubtedly very important, in most cases, universities are looking for much more in the students they recruit. Students who join DHSZ are likely to encounter a very different set of challenges to those they have experienced thus far in their education. Consistent with the Dulwich ethos is an expectation that students participate in a range of co-curricular and service projects. This broad approach to the holistic development of our students offers the best possible credentials and preparation for university life.

Through our diverse and rich programme of co-curricular clubs and activities, assemblies and trips, we ensure that our students are able to acquire additional skills and to demonstrate a commitment to other interests. We also foster a strong sense of community spirit and friendship through participation in activities beyond the classroom. The Dulwich experience shapes and develops students so that they are able to derive the greatest possible benefits from their foreign university studies.

学生取得优异成绩十分重要，但大学对于学生的整体素质也尤为注重。进入德威国际高中的学生将面对与他们之前学习经历完全不同的挑战。秉承德威的一贯教育理念，我们要求学生参与数量众多的联课活动和社会服务项目，这些都为学生在未来大学的学习生活提供了全面的准备。

通过丰富多彩的学生社团、校内集会和联课活动，我们的学生能获得课堂之外的各种技能并培养善始善终的责任感。他们还能在课堂之外的这些活动中学会合作、发展友谊。“德威理念”塑造和培养了学生，使他们在未来的国外大学中受益更多。



A group of students are hiking on a rope bridge in a forest. The student in the foreground is a girl with glasses, wearing a blue jacket and a large orange backpack, smiling and holding a trekking pole. Other students are visible behind her on the bridge.

Co-Curricular Activities

联课活动与实践

The Co-Curricular Activity programme this year has over 60 teachers led CCAs, consisting of Sports and Skills activities, which run on Mondays, Wednesdays and Thursdays; extensions to the number of Sport Teams competing with local schools throughout the year and Academic Societies furthering students' engagement in subject areas that they are passionate about. Some of the new CCAs that run include Golf, Swimming and Yoga. Both sports and skills activities tie in to the Duke of Edinburgh's International Award, and satisfy the Physical Recreation and Skills requirements for all levels of this prestigious achievement.

Sports CCAs provide the opportunity for students to work as part of a team, while improving physical fitness, stamina, and strength. They help students to form good, health habits, and to develop new friendships.

Skills CCAs allow students to try new and diverse activities, developing hobbies and interests, while making new friends and learning new Skills.

We hope that students can develop important social skills through participating in co-curricular activities, and come away with enhanced teamwork, leadership, and communication skills. Above all though, our students should have fun, and enjoy themselves in the activities that they try.

我校今年由教师带领的联课活动项目多达 60 多种，分为运动社团与技能社团（每周一，周三与周四进行）两大类。另外，今年校运动队的数量有所增加，他们将代表我校参与到与当地其他学校和团体的比赛中。本学年，我校加入了如击剑、服装设计、建筑设计等新社团。这些联课活动和爱丁堡国际公爵奖（国际奖项）的要求紧密相连，在娱乐性与技能性上同时满足各阶段的要求。

运动社团让学生在发挥团队协作的同时提高自身能、耐力与力量，并帮助学生养成良好的健身习惯与发展新的友谊。

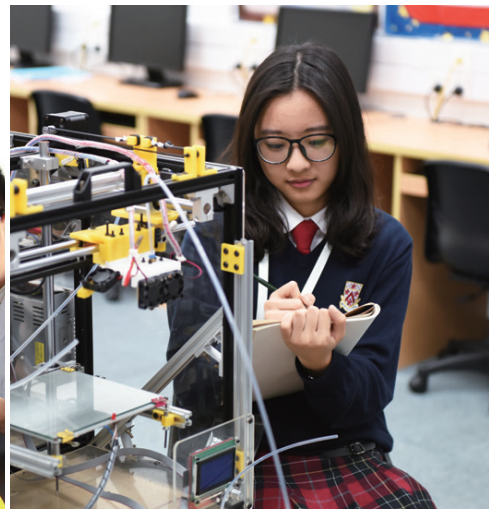
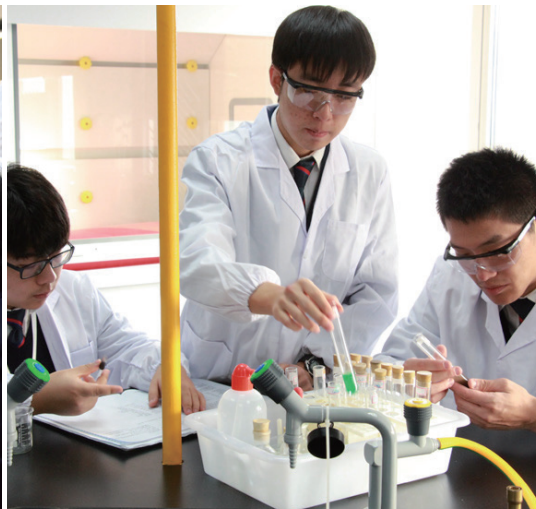
技能社团让学生有机会接触到新兴且多样的活动，在发展兴趣爱好的同时获得技能并提高社交能力。

我们坚信，通过联课活动，学生将获得重要的社会技能，更好地学习团队协作、培养组织领导能力与提高社交技能。总而言之，学生将在联课活动中享受快乐，发掘自我。

请扫描下方二维码下载联课活动手册：

Please scan the QR code below to download CCA brochure:







Dulwich Inter-School Events 德威校际特色活动

Our students have many opportunities to meet and create links with a wide range of international students because we are part of the larger Dulwich College network. Our students can participate in a variety of events and activities with students from other Dulwich schools, including Dulwich College London.

作为德威教育集团的学校之一，我们的学生有更多机会接触其他国际学生，与德威在亚洲的十一所学校及英国的德威公学学生一起参加众多文体交流活动，共享资源。

The International Award

The Dulwich Olympiad

The Dulwich Climate Conference

The Dulwich Shakespeare Festival

The World Scholar's cup

The International Schools Choral Music Society

The High School Team Maths

The Model United Nations

The Science & Art Photo Competition

The Student Leadership Conference

爱丁堡公爵奖

奥林匹亚盛会

德威气候大会

莎士比亚戏剧节

世界学者杯

ISCMS 音乐节

高中数学团体竞赛

模拟联合国大会

科学与艺术摄影大赛

德威教育集团学生领导力研讨会

Pastoral Care and Wellbeing 德育关怀与身心健康

28

The quality of our pastoral care and student support is one of our distinguishing features, because we know that young people learn best in an atmosphere of support and care. Our overarching goal is that every single student in our school is known and cared for.

对学生高品质的德育关怀和支持是该校的一大特色，因为我们深知年轻学生们在一个洋溢着关怀与支持的氛围下有助于发挥他们最大的潜能。我校德育关怀工作的首要目标是让每一位学生都得到充分的关注与爱护。



Each student is assigned to a tutor group, and they meet with their Form Tutor every morning as a group. Students also meet their tutor individually at least twice a semester. The tutors track students' academic progress and physical, social, and emotional wellbeing closely to provide guidance and encouragement. In turn, the tutors work with the Heads of Year to ensure that all our students have someone at the school who knows them well. The tutors play a very important part in guiding our students towards becoming self-directed, independent learners and confident young adults who are well prepared to cope with the challenges of life at university by the time they graduate.

We also have a team of Parent Liaisons who support the work of the Heads of Year and the Form Tutors by maintaining high levels of contact and communication with the parents of our students. We believe that education is a partnership between home and school and that parents have a vital role to play helping their child learn and develop. We encourage parents to work closely with us and be actively involved in supporting their child's academic and personal wellbeing.

每个学生会被分配到相应的行政班级，并且和行政班的班主任老师每天早晨进行集体会面，并进行每学期至少两次的单独会面。班主任老师密切关注每个学生的学术进步和生理、社会和心理健 康并对他们进行相关的指导和鼓励。与此同时，班主任老师会及时和年级组长反馈学生情况确保全面了解学生。班主任老师在指引学生能够独立自主和自信应对将来在大学的挑战时起到了一个非常重要的作用。

学校还配有专职家校联络教师，他们负责定期与家长和学生沟通，与他们保持紧密的联系，为各年级组长与班主任老师提供强有力的支持。我们坚信教育是建立在家庭与学校合力的基础上，家长在促进孩子的学习和 发展方面起到举足轻重的作用。



Boarding 寄宿管理



30

With students from 16 provinces and 48 municipalities and administrative regions across China, Boarding at DHSZ provides safe and homely accommodation for over 70% of our students. We have three boarding houses on and off-campus with modern comfortable rooms that sleep 2-4 students. Each floor is supervised by a mixture of expatriate and Chinese boarding staff who live full-time in boarding. The Head of Boarding and House Parents have apartments within boarding and ensure that students are adequately supervised and cared for. There is also a daytime medical centre on-campus and an evening nurse on duty.

We have a mixture of weekly boarders who go home at the weekend, and termly boarders who live further from school and go home during the holidays. There is a weekend activity programme for our termly boarders comprising trips in and out of Suzhou throughout the year. There are two hours of supervised study time each evening, Sunday to Thursday, and this provides students the opportunity to complete homework and prepare for classes in a quiet, distraction free environment. We regularly collect feedback from our boarders and they consistently report high satisfaction with boarding scores and tend to do better academically than our day students.

As a boarding school, our dining hall provides meals with a combination of Chinese and Western cuisine and students have access to a variety of sandwiches, pastries, snacks and drinks from our coffee shop. A Nutrition Committee works with our catering providers to ensure healthy and nutritious food options are available to all students and staff.

目前，我校学生主要来自于中国 16 个省的 48 个市。苏州德威国际高中为超过 70% 的学生提供安全温馨的住宿体验。我校目前有三栋校内外住宿公寓，公寓设施舒适且现代化，住宿间可提供 2-4 位学生住宿。住宿公寓的每个楼层均有外国住宿老师与中方住宿老师共同管理，他们也同样全职住在公寓内。宿管主任也同样在公寓楼内住宿，能够确保学生获得充分的监管与关怀。校园内设有医务室，并且有晚班护士值班。

我校住宿学生由周住宿生（周末回家）与长期住宿生（节假日回家）组成。我校为长期住宿生组织丰富多彩的活动，如苏州市内或周边旅游。周日至周四，学生将在老师的监管下进行晚间 2 小时的自习，学生将在这一安静、不被打扰的时段完成作业及课程预习与复习。我校住宿部门定期从住宿生处获得反馈以提高工作质量。目前来看，我校住宿生高度满意我校住宿设施与管理，且较非住宿生有着更加优异的学术成绩。

作为一所寄宿学校，我们的餐厅同时提供中式及西式的餐饮服务。同时，我校的咖啡吧也为师生提供多样性的餐饮选择。我校的食品营养委员会与餐饮供应商共同合作，以确保给所有的学生和工作人员提供健康和营养的食物选择。



请扫描以下二维码下载住宿手册：

Please scan the QR code below to download boarding handbook:



University Counselling 大学升学指导

32

All students at DHSZ expect to attend universities outside of China and we take great care in preparing our students for their university applications. The university application process abroad is considerably more complex than the equivalent process in China; all our students attend classes and workshops that prepare them thoroughly to make informed best choices about the next stage of their educational journey.

我校所有学生毕业后都会远赴海外大学深造，而申请海外大学的手续比申请国内大学复杂很多，所以学校非常重视大学申请方面的准备工作。学生会参加升学指导课和研讨会，为他们申请大学做充足的准备，使他们能够在踏上未来教育之旅前做出最理智的选择。

DHSZ is the safe bridge for our students to university and we have a team of expert university counsellors to provide students and their parents with specific careers advice, practical help, and support. From the time each student joins DHSZ, our counsellors work with them on a regular basis to map out an individual plan to achieve a university place that fits their aims and suits their abilities. Our counsellors spend time with each student and their parents in individual sessions during the application process. Parents are also provided with support and information that helps them to become actively involved in the process. We hold various information sessions throughout the year and counsellors are available to talk to parents face-to-face on an appointment basis or by phone. By the end of Year 12, students will have researched numerous universities, they will have also gained skills in big data, analytical thinking and applying that knowledge in self-reflective exercises.

Furthermore, we bring the universities to our students. Our counsellors have strong links with a wide range of excellent universities around the world and host visits to DHSZ from the admission officers of over 100 of those universities throughout the year. Students are able to spend time with these admission officers to discuss the majors they offer, as well as to find out general information about the country or university they represent.

The proof of the excellent systematic support our students receive is the success our graduating students gain in admission to top universities.

Our students go on to attend top research universities, liberal arts colleges, specialty universities and art schools around the world, including Oxford, Cambridge and other universities in the Russell Group in the U.K.; the Ivy League universities in the U.S., McGill and Toronto in Canada.

我校是学生通往心仪大学的坚实桥梁。我们拥有专业的大学升学指导团队为学生和家长提供明确的职业指导和切实的帮助与支持。自学生入学起，升学指导老师会定期和学生见面交流，为每个学生量身定制升学计划大纲，引导他们最终进入最适合自己的理想大学。在申请期间，升学指导老师还为学生和家长提供一对一的指导与咨询。同时，我们也为家长提供大学申请方面的信息与支持。每学年我们都会组织大学招生信息说明会。家长可以通过电话与升学指导老师交流或通过预约与老师进行面对面的沟通。到 12 年级结束时，学生不仅对大量的大学进行了研究，同时也掌握了大数据、分析思维、公众演讲方面的技能。

此外，我们还给学生提供许多与大学近距离接触的机会。升学指导团队与众多世界知名大学保持紧密联系，每年都有一百多所大学的招生官来访，让学生有机会面对面与招生官交谈，和他们讨论这些大学提供的专业，更全面地了解国家和大学的相关信息。即将毕业的学生被他们心仪的大学录取就强有力地证明我们的学生得到了出色、系统的大学申请指导与支持。

我校的大多数学生都被世界各地的顶尖研究型大学、文理学院、艺术学院等录取，这些大学包括牛津、剑桥以及英国罗素大学集团的大学、美国常春藤盟校和加拿大多伦多、麦吉尔大学等等。



Our Successes 我们的成功

A close-up photograph of a young woman with long dark hair, smiling broadly. She is wearing a black graduation gown with a bright orange stole. In the background, other graduates in similar attire are visible, though slightly out of focus.



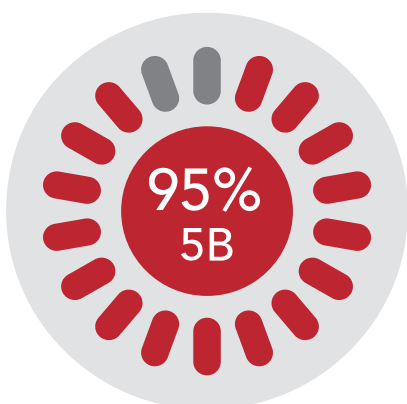
Academic Achievements 优异学术成果

35

We take great pride in our students' academic achievements, as well as the holistic approach we take to achieve these results. All Dulwich schools report academic results which position them as some of the best performing schools locally, regionally and internationally and, this year, Dulwich International High School Suzhou is no exception. Our students have excelled in their Cambridge International Examinations (CIE) and Edexcel IGCSE, AS and A Level examinations. Some of the highlights are given below:

我们为学生的学术成就感到骄傲，德威学校延续了德威公学优秀学术传统，其优异的学业表现使得每个德威学校都被视作该城市、地区乃至国际上最优秀的学校之一。苏州德威国际高中学生在 2018 年剑桥大学国际考试委员会 Cambridge International Examinations (CIE) 及爱德思 Edexcel 组织的 IGCSE、AS 和 A Level 全球统考中表现优异，部分佳绩分享如下：

IGCSE



Our IGCSE results continue to be of an excellent standard. From 2016 to 2018, the average percentage of students achieving five A grades or better is 56%. The last 3 years has also seen the average percentage of students receiving 5 B grades or higher, sit at 95%.

苏州德威国际高中完成 IGCSE 课程的学生，他们的全球统考成绩从 2016 年至 2018 年一直维持在较高的水平。近三年间，每年平均 95% 的学生获得 5B 及以上的成绩。

This Year's Highlights in IGCSE Results

今年 IGCSE 战绩

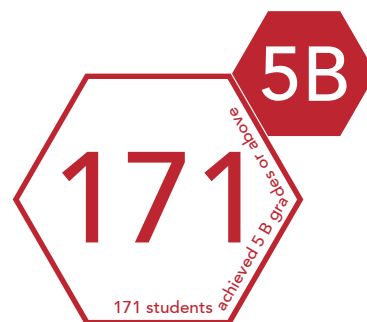


近一百名学生获得了 IGCSE 平均 5A 或以上的成绩



61 students achieved 7A grades or higher

61 位学生获得了 IGCSE 平均 7A 或以上的成绩



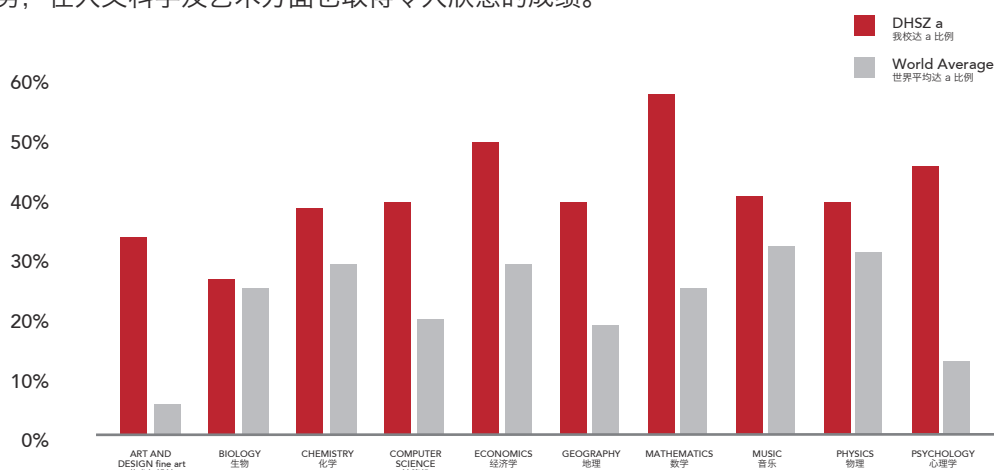
171 位学生获得了 IGCSE 平均 5B 或以上的成绩

AS and A Level

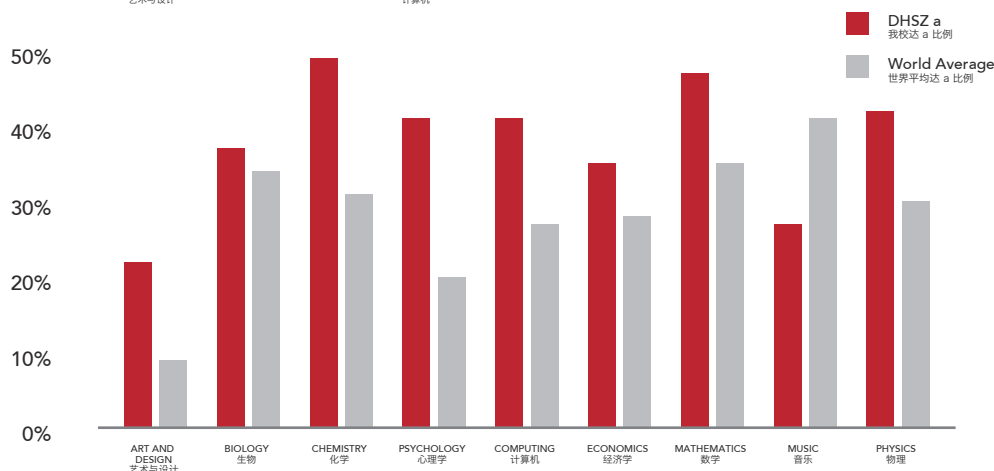
The Cambridge International Examinations (CIE) and Edexcel results were the best achieved in our school's history and continue to be significantly higher than world average results. We have strong performances in both humanities and science subjects.

2016 至 2018 年间，我校学生在 AS Level 和 A Level 全球统考中各科成绩均高于世界平均水平。学生们不仅保持理科方面的优势，在人文科学及艺术方面也取得令人欣慰的成绩。

AS LEVEL



A LEVEL



This Year's AS Highlights

今年 AS 战绩



This year, 42 students achieved 3 A grades or above.

42 位学生获得了 3A 及以上的成绩。



In Biology, 56% of students achieved A grades and 80% of students achieved B grades or above.

生物有 56% 的学生获得 A 的成绩，80% 的学生获得了 B 及以上的成绩。



Outstanding performance in Fine Art with 100% A Grades.

今年纯艺术科目 100% 的学生获得了 A 的成绩。

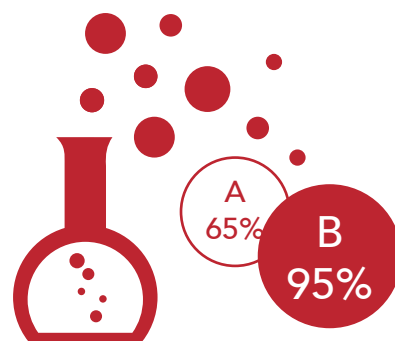
This Year's A Level Highlights

今年 A Level 战绩



Among the 17 students who achieved 3 A grades or higher this year have received their acceptances from the world's top universities.

17 名学生获得了 3A 及以上的成绩并且录取到了世界顶尖名校。

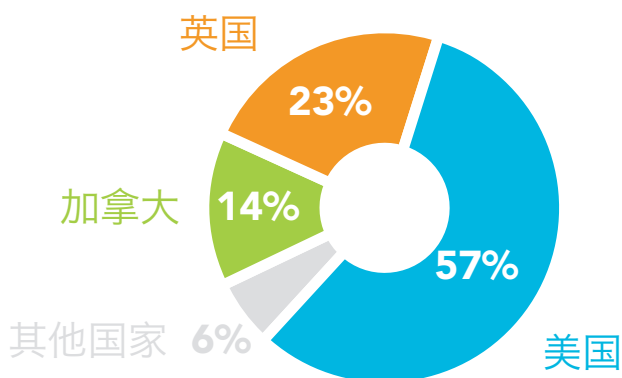


Exceptional performance in Chemistry subject, 65% students achieved A's or higher, 95% students achieved B's or higher.

今年化学成绩特别突出，65% 的学生获得了 A 或以上的成绩，95% 的学生获得了 B 或以上的成绩。

University Matriculations

大学录取佳绩

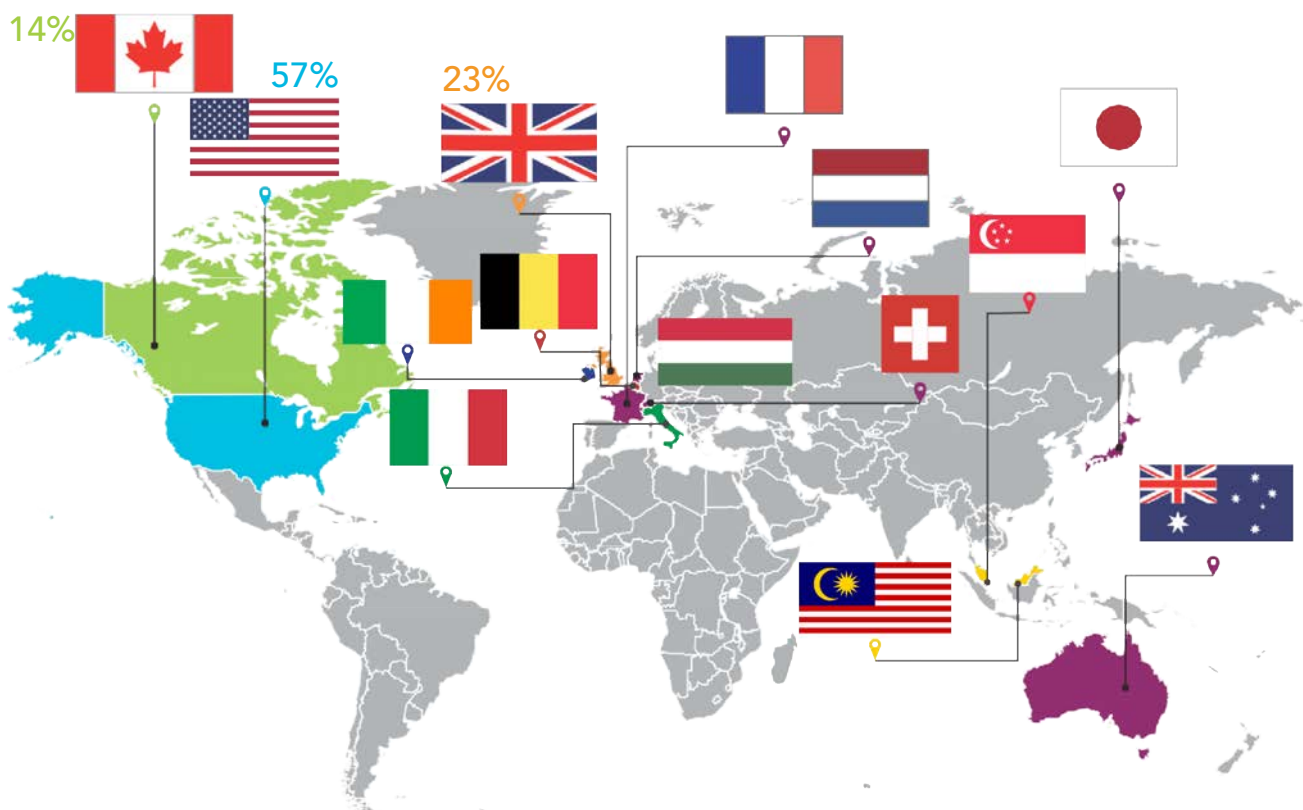


Our school has positive relationships with universities overseas and we strive to maintain these relationships for the benefit of current and future students' application success. The DHSZ approach and philosophy concerning university is to equip students to graduate from our school and then attend and graduate well from "Best fit" university. Best fit is a practice of assisting each individual student to select the university that will best develop that specific student's academic performance, personal attributes and career goals.

From 2014-2018, the majority of our students have gone on to university in the United States (57%), 23% of the students went to university in the United Kingdom, and 14% matriculated to university in Canada. In addition, our students also apply successfully to Australia, Belgium, the Netherlands, Italy, Hungary, Ireland, Switzerland, Japan, Malaysia, Singapore and Hong Kong. Dulwich students are all around the world!

我校与世界各大学长期保持良好关系，继而以利于当前及未来学生的大学申请。苏州德威国际高中的宗旨是帮助学生进入“最匹配”他们的大学并顺利毕业。“最匹配”大学的理念和实践旨在帮助每一位学生选择与自身在学术优势、个人特性及职业目标上全面匹配的大学。

在2014-2018的五年间，大部分学生（57%）已经在美国的大学就读，近23%的学生就读于英国大学，14%的学生就读于加拿大的大学。除此之外，我校学生也申请到澳大利亚、比利时、荷兰、意大利、匈牙利、爱尔兰、瑞士、日本、马来西亚、新加坡及香港等国家及地区的录取通知书，可谓“德威学子走向全世界！”





Matriculation highlights 数说佳绩

39

- Students have received an accumulated 24 million RMB in scholarship in the past three years.
过去三年中，毕业生们累计收获了价值人民币 2400 万元的奖学金。
- Graduates go to over 13 countries in North America, Europe, Asia and Australasia.
毕业生去向 13 个以上的国家，分布在北美洲，欧洲、亚洲及大洋洲。
- Of the students attending university in the US in the past five years, 44% are in the Top 50 (US News).
在过去五年中就读于美国大学的学生中，44% 进入了美国排名前 50 的大学。
- Six graduates went to Ivy League Schools, including Brown University, Cornell University, Columbia University and University of Pennsylvania.
6 位毕业生去往常春藤盟校就读，包括布朗大学，康奈尔大学，哥伦比亚大学以及宾夕法尼亚大学。
- Of the students attending university in the UK in the past five years, 43% are in the G5 university (Cambridge University, Oxford University, Imperial College London, London School of Economics and Political Science, University College London).
在过去五年就读于英国大学的学生中，43% 进入了英国五所超级精英大学（剑桥大学，牛津大学，帝国理工学院，伦敦政治经济学院，伦敦大学学院）。

UK

University of Cambridge
University of Oxford
University of the Arts London
London School of Economics & Political Science
Imperial College London
University College London
University of St Andrews
Durham University
University of Warwick
University of Bath
University of Sheffield
Royal Veterinary College, University of London
University of Leeds
Goldsmiths, University of London

英国

剑桥大学
牛津大学
伦敦艺术大学
伦敦政治经济学院
伦敦帝国理工学院
伦敦大学学院
圣安德鲁斯大学
杜伦大学
华威大学
巴斯大学
谢菲尔德大学
皇家兽医学院
利兹大学
伦敦大学金史密斯学院

USA

Columbia University
Brown University
Cornell University
Rice University
Washington University in St. Louis
University of California, Berkeley
Emory University
University of California, Los Angeles
University of Southern California
University of Virginia
Wake Forest University
New York University
Case Western Reserve University
Georgia Institute of Technology
University of Rochester
Pepperdine University
Brandeis University
University of California, Santa Barbara
University of California, Irvine
University of California, San Diego
Boston University
Rensselaer Polytechnic Institute
Haverford College
University of California, Davis
University of Illinois at Urbana-Champaign
Embry-Riddle Aeronautical University - AZ
Southern California Institute of Architecture
Massachusetts College of Pharmacy and Health Sciences
Smith College
Mount Holyoke College
Art Center College of Design
California College of the Arts
Pratt Institute
Rhode Island School of Design
Parsons The New School for Liberal Arts

美国

哥伦比亚大学
布朗大学
康奈尔大学
莱斯大学
华盛顿大学 - 圣路易斯
加州大学伯克利分校
埃默里大学
加州大学洛杉矶分校
南加州大学
弗吉尼亚大学
维克森林大学
纽约大学
凯斯西储大学
乔治亚理工学院
罗切斯特大学
佩珀代因大学
布兰迪斯大学
加州大学圣巴巴拉分校
加州大学欧文分校
加州大学圣地亚哥分校
波士顿大学
伦斯勒理工学院
哈弗福德学院
加州大学戴维斯分校
伊利诺伊大学香槟分校
艾姆伯里 - 利德尔航空学院
南加州建筑学院
麻省医药与健康科学学院
史密斯学院
曼荷莲学院
美国艺术中心设计学院 (加州)
加州艺术学院
普瑞特艺术学院
美国罗德岛设计学院
帕森斯设计学院

Canada

McGill University
University of Toronto
University of Victoria
University of British Columbia
University of Waterloo
McMaster University
Dalhousie University
University of Alberta
University of Ottawa

加拿大

麦吉尔大学
多伦多大学
维多利亚大学
不列颠哥伦比亚大学
滑铁卢大学
麦克马斯特大学
达尔豪斯大学
阿尔伯塔大学
渥太华大学

Other Countries and Regions

Dublin Institute of Technology
The Australian National University
The University of Melbourne
The University of Sydney
University of Amsterdam
Ecole Hoteliere de Lausanne
Sciences Po
Waseda University
The University of Hong Kong
Nanyang Technological University

其他国家和地区

爱尔兰都柏林理工学院
澳大利亚国立大学
澳大利亚墨尔本大学
澳大利亚悉尼大学
荷兰阿姆斯特丹大学
瑞士洛桑酒店管理学院
法国巴黎政治大学
日本早稻田大学
香港大学
新加坡南洋理工大学

* Full details of student acceptances can be found on our website and wechat. 学生的完整录取情况详见我校官网和微信。



Admissions 入学申请



When you decide to apply for admission to DHSZ for your son or daughter, you are making a wise and thoughtful choice. When you make contact with our Admissions staff, they will assist you through the Admissions process and answer all your questions. They are happy to advise you about the best course for your child.

The curriculum we offer is very challenging and entry to our school is selective. We have two important criteria for admission: academic ability and English language proficiency. In order for students to be successful at our school, they need to be able to cope with the level of challenge and pace of work at our school. Students also need to have reasonable English fluency in order to be able to access the curriculum effectively.

Applicants to our school are tested in English, Mathematics and Science. However, we do not simply prepare students for entrance to university; we prepare them to do well and to be successful when they get there and so we also interview applicants to determine their attitude, readiness and potential to do well in our educational context.

We welcome students who are academically strong, hard-working, well-motivated and ambitious for their future. We expect students who gain admission to our school to be hard-working and well-motivated not only in terms of academic attainment but also in terms of participating fully in the range of opportunities available to them through our co-curricular and sports programmes and through the many other opportunities for personal development that we offer at our school.

The only way to determine if your child is suited to our school is to pay us a visit. Our Admissions staff will welcome you, show you around and give you information about how to apply.

We look forward to welcoming you!

当您决定为您的孩子申请苏州德威国际高中时，您的选择是明智的。我们负责招生的老师很乐意协助您办理入学相关手续，为您解答疑惑，并建议最适合您孩子就读的课程。

由于我们的课程非常具有挑战性，因此会对学生进行严格筛选。我校通过自主招生考试，考核学生对学科专业知识的掌握及对英语综合能力的运用。学生需具备应对各种挑战和适应课程进度的能力，同时还得具备一定的英语流利度，从而更有效地理解和学习，并获得成功。

我们不仅只是为学生申请大学准备好有力的敲门砖，更重要的是，我校还为他们升入大学后的学习与生活做充分准备，使其在大学里获得成功。我校入学考试的科目分别是英语、数学与科学，同时，我们还会通过面试判断学生的态度、成熟度及适应国际课程的潜力。

我们欢迎学习努力、积极主动及志向远大的学生来报考我校。我们希望通过我校选拔考试的孩子不仅仅在学习上充满热情、积极主动，更是积极参与我校各种各样的联课活动，以及其他我校开展的发现自我和挑战自我的多种项目。

请带孩子来参观我校，和我校招生处老师见面深谈，从而全面了解学校和课程。同时，招生处老师还会为您提供诚恳的建议和全面的报考指导。

请扫描以下二维码预约看校：

Please scan the QR code below to make an appointment to visit our school:



我们期待您的来访！

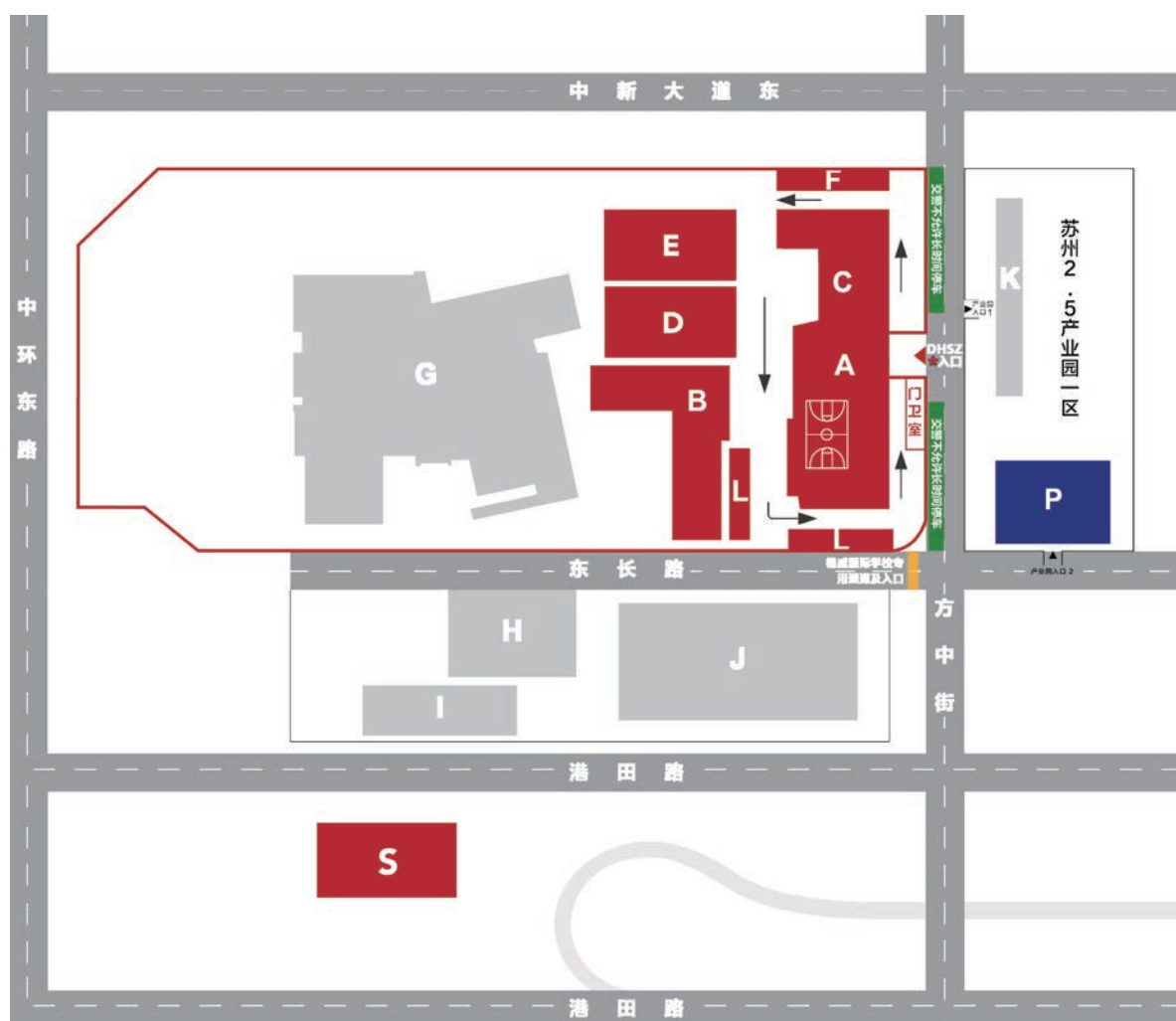
We welcome parents to call our admissions office, or find out more about our school by following us on Wechat or browsing our website. Parents are also encouraged to make an appointment to visit our school in person.

欢迎家长致电我校招生办，或者通过关注、浏览我校官网和官方微信，提前了解学校的相关动态；家长也可预约到校参观，了解详细信息。

Admissions Office 招生办电话：+86 (0) 512 67875003 / +86 (0) 512 67875023
Fax 传真：+86 (0) 512 62959007
School Website 学校网站：<https://suzhou-high-school.dulwich.org/>
Admissions E-mail 招生办邮箱：admissions@dchigh-suzhou.cn



苏州德威国际高中
官方微信号
Dulwich International High School
Suzhou Official WeChat Account



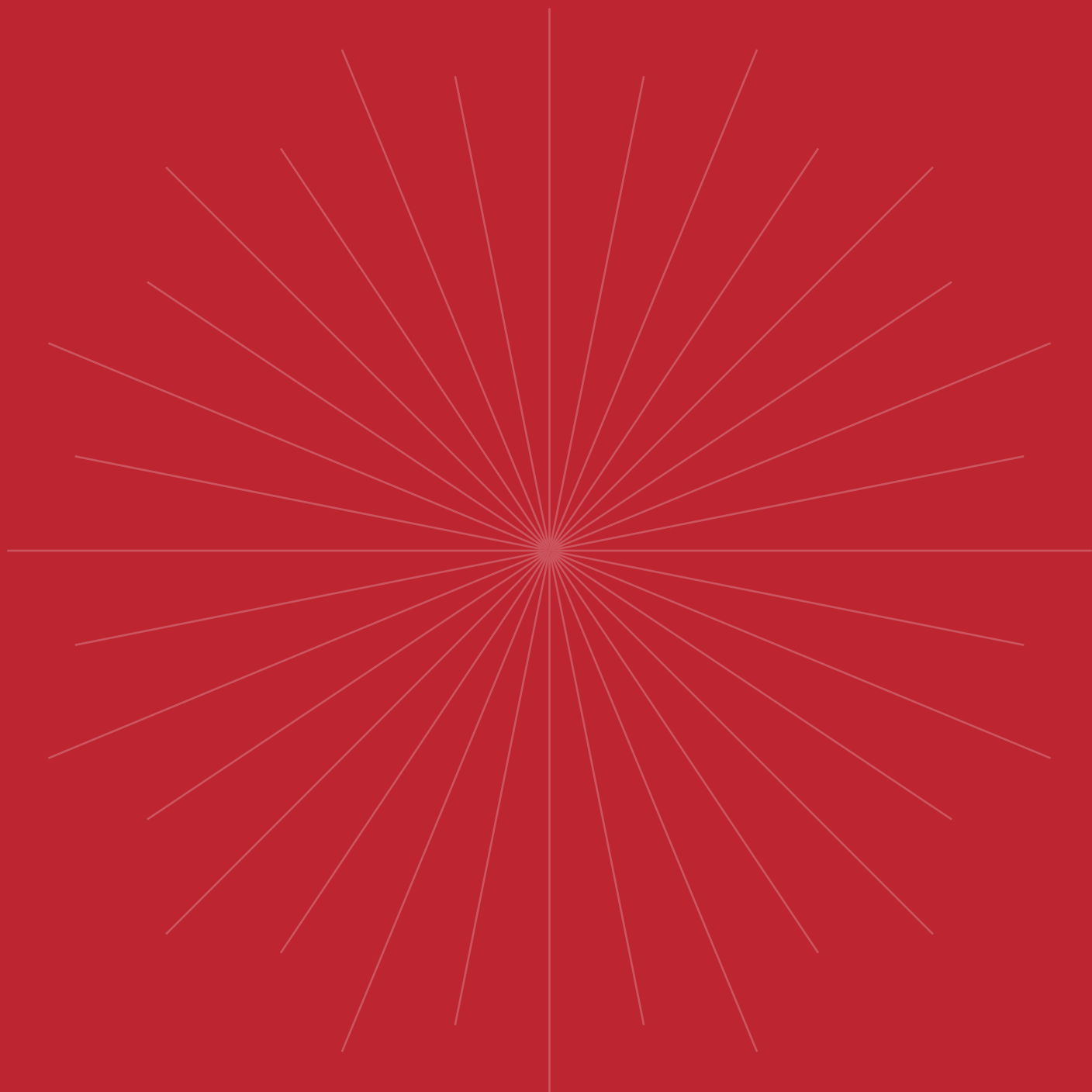
- | | | |
|---------------------|---------------------------|-------------|
| A 德威国际高中 | F 自行车停车场(只有佩戴头盔者允许进入并停车) | G 德威国际学校中学部 |
| B Alleyn House 艾伦公寓 | L 员工停车场(单行) | H 德威国际学校幼儿园 |
| C 德威国际高中餐厅 | P 家长和访客停车区(收费: 5元/3小时内) | I 德威国际学校小学部 |
| D 足球场 | S Shackleton House 沙克尔顿公寓 | J 苏州中学园区校 |
| E 网球场 | | K 美食一条街 |

Address :

Fangzhong Street Near East Zhongxin Ave, SIP, Suzhou, Jiangsu, China

学校地址: 中国江苏省苏州市工业园区方中街与中新大道东交叉口







**DULWICH INTERNATIONAL
HIGH SCHOOL**
| SUZHOU |
SUZHOU HIGH SCHOOL
德威国际高中, 江苏省苏州中学

Fang Zhong St. Near East Zhong Xin Ave. SIP, Suzhou, Jiangsu Province, 215021 P.R. China
中国江苏省苏州市工业园区 方中街与中新大道东交叉口, 邮编 215021

Tel: 86 512 6787 5079

Fax: 86 512 6295 9007

<http://suzhou-high-school.dulwich.org>