



DULWICH COLLEGE | SHANGHAI PUXI |
上海德威外籍人员子女学校(浦西)

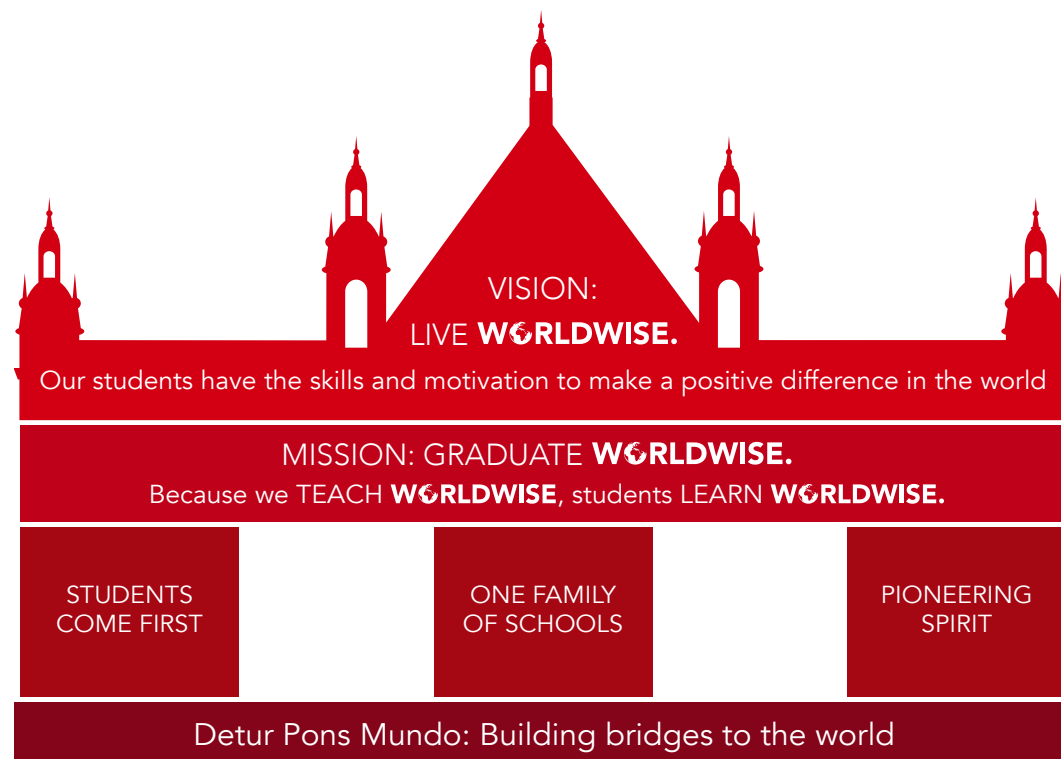
Prospectus



GRADUATE **WORLDWIDE.**™



Our Vision and Mission



Scan to learn more

Founded in 2016, Dulwich College Shanghai Puxi draws on the rich 400-year heritage of our Founding School, Dulwich College in England, as well as our family of Dulwich College International schools, aiming to provide the very best international educational available today.

Our Vision and Mission is guided by three pillars, and underpinned by our motto, Detur Pons Mundo; Building Bridges to the World.

Our clear vision - to create the best schools in the world so our students make a positive difference - guides the decisions we make as a family of schools. Our schools, founded in 2003 by parents who wanted the best for their children, have always and will continue to put our students first. We use the strength of our network to continue to pioneer and innovate in all aspects of the organisation – from curricula and educational spaces to events and technology.

Our students are already among the world's best, and Dulwich College International's young alumni, who are all still under 30, are already beginning to make a difference as they enter the worlds of medicine, law, business, technology, the arts and public service. We can't wait to see what they'll do.

Now in our 5th year of providing academic excellence to families in Shanghai, we here at Dulwich College Shanghai Puxi are proud of what we have achieved. Perhaps more though, we are inspired and excited about what the future holds. Situated in our state-of-the-art, custom built 40,000 square metre campus in green Minhang, we have at our fingertips resources and facilities that can enable us to continue to grow, while providing our students with a world-class holistic education. This academic year, our first cohort of IGCSE students will sit their exams, and we are confident that they will achieve to the level befitting Dulwich students. Beyond, we look forward to opening our International Baccalaureate Diploma Programme, providing our students with the skills, experiences and qualifications required to thrive at universities around the world, and beyond.

In our 5th year, the future is bright for Dulwich College Shanghai Puxi.

Our Head of College

Dear Parents,

I am writing to you as the founding Head of Dulwich College Shanghai Puxi. I am also writing to you as the father of two children, who were among the first students of the school.

I am very proud to have joined Dulwich College's long standing tradition of excellence and am motivated to provide my children, and yours, with an education that will enable them to flourish as they pursue their English and Chinese learning journey on their way to university.

Choosing the right school is among the most important decisions we, as parents, have to make. Please take your time to talk to my team and understand more about our school and its solid curriculum, exceptional facilities and wide range of co-curricular opportunities.

I invite you to visit us and look forward to welcoming your family to our school.

Warm regards,

David Ingram
Founding Head of College
Dulwich College Shanghai Puxi

**FROM OUR
HEAD OF COLLEGE**



Our Heritage

“

As The Master of the College founded in 1619, I am inordinately proud of the association with our international schools. I believe in them as a commonwealth of schools united behind a single educational philosophy.

– Dr Joseph Spence,

The Master of
Dulwich College



Scan to learn more



The future, founded in 1619

Dulwich College was founded by Edward Alleyn on 21 June 1619 with letters patent from King James I. This historical document, affixed with the Great Seal of England, still survives. An actor linked to Shakespeare's Globe Theatre and an entrepreneur in the world of Elizabethan and Jacobean theatre, Alleyn was a colourful and famous figure of his days. At the age of 47, Alleyn decided to establish a school for boys in London that would provide sound learning, strong artistic pursuits and good manners.

Today Dulwich College is an academically selective boys' school, attracting students from the top 15% of the UK academic range. Set in South London, the school benefits from historic buildings sitting alongside modern architecture and beautiful green open spaces. Dulwich College has built a solid reputation with its strong academics, inspired teaching and educational innovations.

The College has long been a pioneer in education. In the 1880s, Master Canon Carver introduced the "Modern Curriculum" to the College, and in the 1940s the College embarked on the "Dulwich Experiment", admitting students on a needs-blind basis, based on academic ability alone. Among the beneficiaries of the Dulwich Experiment was Lord George of St. Tudy (Eddie George), the Dulwich postmaster's son who became Governor of the Bank of England. Dulwich College was the first British independent school to take its practices and ethos to Asia. The College also has produced leading scientists, actors, film directors, musicians, sportsmen and writers, a number of whom have visited Dulwich College International (DCI) schools to talk of their experiences.

Dr Spence and Deputy Master (External) Cameron Pyke make annual inspection visits to DCI schools, whose teachers and students enjoy close collaboration with their peers from our founding school on academic and co-curricular projects each year.

At Dulwich College Shanghai Puxi, our links to our Founding School are strong, and we collaborate closely with the other schools in the network to encourage an international outlook and create an extended community where academic ability is fostered, creativity is valued, and diversity is celebrated.

We are proud to share a common heritage with all the schools in the DCI network, and equally value the traditions, unique to our school, that we have created since we opened.

A school's traditions build the sense of community and at Dulwich College Shanghai Puxi our traditions celebrate 400 years of excellence and tradition from Dulwich College. They form part of our culture and are firmly embedded in all that we do.

Our Values

Aim High
Work Hard

Be Kind

Be Respectful

Make A Difference

At Dulwich College Shanghai Puxi, we believe that every student no matter their age has the right to access the sharpest minds, past and present, in order to receive the very best of teaching and learning. Our curriculum embraces all mediums of communication from around the world, exposing students to global views; thoughts, ideas and knowledge from which they develop their own international mindset. It is our belief that by doing this, our students not only learn about the world around them, but as they develop, they will have a greater ability to transform it in the future.

Our curriculum is academically rigorous. Dulwich students are in the business of learning and there is an expectation that they will rise to this challenge with discipline and good grace. We expect students to have exemplary manners and uphold our College values at all times; **Aim High and Work Hard. Be kind and respectful. Make a difference.**

We encourage healthy competition. We expect all students to 'have a go' and do their best. And we do this whilst always upholding the values of empathy, compassion and kindness. We expect our students to use their privilege for good.

At Dulwich College Shanghai Puxi, the education of the whole child is critical and our curriculum offers daily routines and opportunities to ensure that students of every age are able to develop socially and emotionally well. Whether they are serving each other food during our family-style lunches in the College restaurant, or participating in our student led agencies, like the Student Council. We believe it is our responsibility to nurture and support students' voices at all ages, as they are the hearts and minds of our College.

To realise this philosophy we believe the following five skill domains will cultivate the dispositions all learners will need to lead successful, meaningful and happy lives in the future:

Communication Skills

Social Skills

Self Management

Research

Thinking

Our Curriculum

Age as of 1 Sept	Dulwich Year Level	Grade Equivalent	UK Key Stage	Curriculum
2	DUCKS	Toddler	Pre-Nursery	Follows standards set of British Early Years Foundation Stage
3		Nursery	Nursery	
4		Reception	Pre-Kindergarten	
5		Year 1	Kindergarten	
6	Junior School	Year 2	Grade 1	Key Stage 1
7		Year 3	Grade 2	
8		Year 4	Grade 3	
9		Year 5	Grade 4	
10	Senior School	Year 6	Grade 5	Key Stage 2
11		Year 7	Grade 6	
12		Year 8	Grade 7	
13		Year 9	Grade 8	
14	Senior School	Year 10	Grade 9	Key Stage 3
15		Year 11	Grade 10	
16		Year 12	Grade 11	
17		Year 13	Grade 12	

Dulwich College Shanghai Puxi educates children from age 2 to 18. The primary teaching language is English, with a Dual Language approach in Mandarin and English in DUCKS. Children up to age 5 follow the Early Years Foundation Stage, and from Year 1 to Year 9, they follow the National Curriculum of England and Wales, which is enhanced to meet the needs of our international student body. In Year 10 they begin the IGCSE (International General Certificate of Secondary Education), a rigorous two-year course that requires students to take a broad range of subjects covering maths and sciences, English and foreign languages, and the humanities. IGCSE will culminate in exams at the end of Year 11, and prepares students well for the two-year International Baccalaureate Diploma Programme (IBDP) which will start in Year 12 in 2021.



Our Approach to Learning

Our approach to learning nurtures confidence and intellectual curiosity in our students, preparing them for success in further education and life beyond. We offer a holistic education founded on scholarship and complemented by rewarding co-curricular programmes. Our network of schools has relationships with leading universities and organisations to bring unique learning experiences to our students.

We encourage our students to take pride in their achievements, both inside and outside the classroom, continuing the tradition of excellence started by Dulwich College. The success of our students is reflected in the university acceptances and scholarships that Dulwich international graduates receive every year. Our international alumni gain entry to some of the top ranked universities worldwide.

Our DUCKS



Scan to learn more

Welcome to DUCKS



“

A Dulwich education aims to ensure that young people become successful learner, confident individuals, and responsible citizens. There is a strong emphasis on children's personal development, including the development of learning and thinking skills and personal, social and emotional skills. The structure of the curriculum has been designed to provide breadth and balance whilst maintaining focus on English, Chinese and Maths.

– Christine Haslett,

Founding Deputy Head of College and Head of Primary

DUCKS at Dulwich College Shanghai Puxi is an extremely welcoming, friendly and inspiring learning environment. All of our classrooms are light-filled and spacious. They are extremely well-resourced to ensure children are inspired in their learning. A huge benefit for our DUCKS students is the beautifully landscaped outdoor play areas - plentiful and perfect for explorative learning in nature – a rarity for many schools situated in Shanghai.

Our curriculum is based upon the English Early Years Foundation Stage Curriculum and the English National Curriculum, adapted for the needs of international children. The curriculum follows seven areas of learning and our highly experienced teachers guide and facilitate a range of exciting and stimulating curricular activities that enable each child to achieve the goals and objectives appropriate to his or her individual stage of development.

The Prime Areas covered are:

- Personal, Social and Emotional Development
- Communication and Language
- Physical Development

The Specific Areas covered are:

- Literacy
- Mathematics
- Understanding the World
- Expressive Arts and Design

Our Dual Language Approach

The DUCKS language development approach values both English and Mandarin equally. We want children to acquire both languages concurrently. We therefore use a dual language approach in our classrooms. Our highly experienced English teachers will lead the curriculum using spoken English. The children's learning will be supported by an Assistant Teacher who speaks Mandarin as a first language, but who speaks fluent English as well. The physical learning environment, including print, will be in both English and Mandarin.

The aim of the Dual Language approach in DUCKS is to develop fluent speakers in English and Mandarin by the end of Year 2 who can comfortably switch from one language to another, while always remaining secure in their first language.



Our Junior School



Scan to learn more

Welcome to Junior School



“

Learning at Dulwich College Shanghai Puxi is an exciting world of innovative academic opportunity. Students in the Junior School are confident, capable, and already have a strong sense of who they are. They are presented with amazing curriculum opportunities which parallel those of top independent schools in the UK and whether they are immersed in classroom academics or shining beneath a spot lit stage, they embrace their learning opportunities with responsibility, respect and vigour. The Junior School at Dulwich College Shanghai Puxi is characterised by a group of young, motivated and outwardly looking learners who are embracing all that Dulwich offers.

– Christine Haslett,

Founding Deputy Head of College and Head of Primary



• Prospectus •

Our aim is to ensure that all the children in our care are happy, confident and enthusiastic learners. We provide an appropriate and balanced academic challenge that enables students to realise their unique potential in a supportive environment.

Junior School students engage in topic-based learning, a cross-curricular approach that integrates different subject matter under an umbrella topic or area of interest. Students have dedicated English and Mathematics lessons and specialist teachers for Mandarin, Physical Education, Art, Design Technology and Music. Where possible, the learning in these subjects is also linked to the current topic.

We offer a stimulating creative curriculum giving students greater autonomy over time, allowing them to take greater responsibility for their learning. Regular assessment tracks student progress to ensure all children achieve to the best of their abilities.

While our curriculum is based on the National Curriculum for England and Wales, it is enhanced to cater for our uniquely international student community. In addition, we bring together all of the benefits that the Dulwich College International family of schools offers to provide the students in our care with the Dulwich Difference. From our unique Mandarin curriculum, to SE21, the performing arts and our holistic approach to student wellbeing, life at Dulwich College Shanghai Puxi Junior School is vibrant and engaging. Students leave the Junior School well prepared to take on the exciting challenges on offer at our Senior School, as they take one step closer to [Graduating Worldwide](#).



Our Senior School



Scan to learn more

Welcome to Senior School

“

In the Dulwich College Shanghai Puxi Senior School we respect our students as unique individuals, support them as curious learners, and treat them as young adults. Our approach to their learning is a personal one – our teachers encourage their students to take measured risks, and explore new opportunities which in turn will enhance their learning. Challenge and goal setting are both important aspects of learning at Dulwich, and I am constantly delighted when I witness our students growing in these aspects of their learning. Senior School is a dynamic experience and aside from classroom academia, I see many of our students embracing our rich co-curricular offering with appetite. From trekking in Thailand to saving lives in the pool, there is a multitude of experiences waiting for your child.



– Kelly King,

Head of Senior School

The Dulwich College Puxi Senior School is characterised by a diverse group of international young adults who are widely recognised as being confident, friendly, outward-looking, collaborative, motivated, and smart young leaders within our school.

From Year 7 to Year 9, students at Dulwich College Puxi study the British national curriculum which leads to IGCSE, and later the IB Diploma. Our enhanced selection of topics, called 'electives' within the curriculum aligns us with the expectations of top independent schools in the UK.

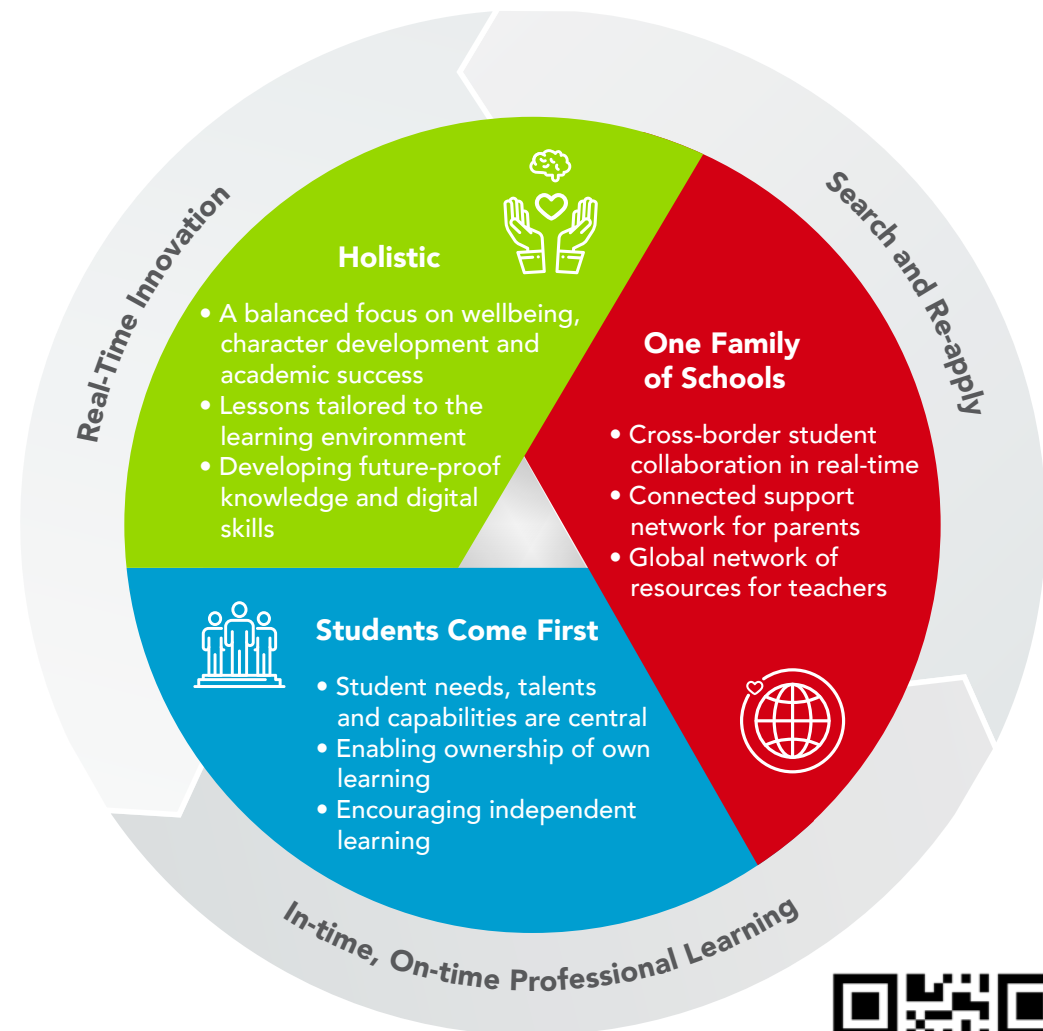
Classes at Dulwich College Shanghai Puxi are small, well resourced and well supported. There are typically around 10 students in most lessons. Our highly qualified, specialist teachers are extremely knowledgeable and encouraging. They really spend time getting to know students and families, to ensure they form positive working relationships with open communication, so that students feel well supported as they progress through the Senior school towards higher level exams.

Dulwich College Shanghai Puxi offers IGCSE options from both Edexcel and Cambridge examination boards, to ensure students have choice and depth in their subject range.

Our Co-Curricular Activities programmes provide opportunities for students to excel and develop passions for and skills in sports, performing arts and academic enrichment. We also encourage all our students to take part in service projects that address local and international needs. As part of our Senior School experience, students participate in The Duke of Edinburgh's International Award. This is a fantastic experience for our students as it takes their learning out of the class, away from books and focuses very much on the life skills they will need to ensure when they finally leave us, they are worldwise.



Our Dulwich Difference



Scan to learn more

Holistic, Experiential Learning Online and On-Campus

To bring holistic, experiential learning to both on-campus and online environments, our teachers put greater emphasis on the following areas:

A balanced focus on wellbeing, character development and academic success

Wellbeing and character development are critical in enabling our students to discover and develop the full extent of their capabilities, talents and academic success. Wellbeing and character development, especially in the digital learning environment, requires even more planning and greater teacher involvement.

We weave in the core values of respect, resilience, ambition and healthy competition into the digital learning environment through the structure of assignments, virtual student interactions and the choice of tools used each lesson. At Dulwich, online learning does not mean on-screen learning. We also focus on developing a healthy balance between digital media, physical exercise, periods of reflective learning and a wide variety of different types of tasks.

Experiential learning in different environments

We teach our students how to use what is around them to learn. That means each lesson is designed to meet the needs of students. At times, students will learn from their immediate environment, and at others, they are challenged to develop conceptual thinking. Especially in an online environment, our teachers help our students use what is in their current surroundings to make lessons meaningful and personally relevant – to help them truly excel academically and personally.

STEAM, Performing Arts, Sports, Digital Skills, Mandarin online and on-campus

Giving our students opportunities in the different areas of STEAM, sports, performing arts and music and Mandarin is a part and parcel of everyday student life at Dulwich. Our programmes offer great depth of learning in each area so that students can push their personal boundaries and fully develop their talents. What is equally important is that we continue to add new knowledge and skill areas for our students. Digital skills, digital literacy and cultivating digital citizenship is a big part of our students' lives today. These areas are intentionally designed into everyday learning – regardless of the context. This enables our students to switch easily between learning environments – and in the future, work effectively in different contexts.

Students Come First

‘Students come first’ is at the heart of everything that we do at Dulwich. Whether it is in the online or on-campus environment, each learning environment and all our learning experiences are designed with the needs, talents and capabilities of our students as the focus. Helping students cultivate their own VOICE and CHOICE in the way they learn, and enabling them to become mature learners who can take ownership of their learning is a big part of life at Dulwich.

This is Student Agency and it is critical for academic success and university life. The digital environment offers some distinct advantages in helping students become independent learners. The breadth of digital tools and applications used by our teachers provide students of any age a variety of ways to learn. Students can better control their pace of learning to enable mastery. Importantly, our students learn to demonstrate what they have learnt to a broader audience using different digital tools – from as early as three all the way until they are 18.

One Family of Schools

One of the unique elements of the Dulwich experience is being a part of a family of schools. We connect our students across campuses and beyond borders for an education that prepares each of them to Graduate Worldwide. Bringing both the digital and on-campus learning environment together means our students have more opportunities to connect with our global Dulwich family, not just for major events like our Student Leadership Conference, but also in real-time for regular projects throughout the year.

Connecting our parent communities across our schools in real-time and on-campus similarly gives our parents a much broader support network. Technology is also used to ensure we have a bespoke experience in building our relationship with parents. Bringing our teaching community together globally means our educators are able to share their most creative lessons and ways of teaching in real-time. For our students, this means benefiting not only from the depth of experience of the teachers on their campus but of those throughout our family of schools.

Our Family of Schools

Dulwich College International is a family of schools with eight International Schools, two International High Schools and sister schools in Asia.



Our Mandarin Programme



Scan to learn more

Mandarin has been an important part of the curriculum ever since Dulwich College International opened its first school in Shanghai in 2003, and we are proud of our track record - 62% of our students have achieved top scores in IB Mandarin.

The richness and diversity of our college communities is such that the full spectrum of linguistic ability in Mandarin is found within our student body. Our students range from complete beginners to those with fully age-appropriate native-language literacy skills. To meet the learning needs of each student, the Dulwich Mandarin curriculum employs three pathways: Mandarin A: Chinese as a Native Language, Mandarin B: Mandarin as a Second Language and Mandarin C: Mandarin as a Foreign Language.

Dual Language Learning in DUCKS in China and Singapore

In our DUCKS schools in China and Singapore, Dual Language learning is a fundamental part of our student development. Our approach is based upon a range of recognised theory about how children learn language and has been developed through in-depth academic and action research by our own leaders and teachers. The programme exposes young learners to English and Mandarin in their natural learning context throughout the day rather than just through formal language opportunities. By providing an environment rich in learning opportunities, with one teacher focusing on English and a second on Mandarin, young children gain the confidence to use language with meaning rather than just through imitation.



Our Approach to STEAM

COMMUNICATION

Verbal
Non-verbal
Intercultural understanding
Giving feedback and negotiating
Written and electronic communication

SOCIAL

Collaboration
Digital citizenship
Relationship skills
Intercultural skills

SELF-MANAGEMENT

Metacognition skills
Organisational skills
Affective and physical skills
Reflection skills

THINKING

Critical thinking skills
Creativity and innovation skills
Transfer skills

RESEARCH

Digital literacy skills
Information literacy skills

STEAM / SE21

SE21 Definition & Framework

S	Science, Technology, Engineering, Arts & Maths
E	Entrepreneurship and Environmental Sustainability
21	21st Century Skills developed in our Approaches to Learning (ATL) Framework

We are proud of our SE21 hubs, a name with multiple meanings. Our founding school Dulwich College sits in Southeast London, in the SE21 postcode, while here at Dulwich College International, the “S” in SE21 stands for STEAM, the “E” for entrepreneurship and environmental sustainability, and “21” for the 21st century skills developed in our approaches to learning framework. The first wave of SE21 hubs in three DCI schools provide locations for pitching ideas, phase one robotics, coding, CAD/CAM, graphic design, film, digital, and virtual reality. Students will be engaged in entrepreneurship and real-world problem solving, pulling in elements of engineering, filmmaking and project-based learning.

To be fulfilled and purposeful in life and work, we need to develop a wide range of character strengths and skills. The DCI framework outlined here provides a means to capture the diverse activities and learning developed through our SE21 and Wellbeing culture. DCI has adapted the IB’s Approaches to Learning (ATL) framework for this purpose and the language can be revised as we move forward in our own particular contexts at every age and stage. Subsequently both the character strengths and skills domains/clusters/descriptors can be regularly revisited to ensure they are meeting the needs of our community.



Scan to learn more

Our Visual and Performing Arts



Scan to learn more



Dulwich College founder and actor Edward Alleyn, through his association with Philip Henslowe and Christopher Marlowe, ignited the theatres on London's Bankside with thrilling and ground breaking plays.

Four hundred years later, Edward Alleyn's creative legacy continues. Pursuit of the arts is a staple of school life and we devote considerable resources to creating opportunities for our students to experience all areas of the arts.

We offer a holistic education equipping our students with skills for lifelong success, therefore we are committed to providing a vigorous arts programme. Students study the arts as part of the academic curriculum throughout their school life, and students in the older year levels are highly encouraged to take IGCSE, IB or A Level in an arts subject. The vibrant arts culture of visiting professional arts practitioners, performances and events is carefully planned to develop and enhance not only the co-curricular life of the school, but also the academic curriculum.

As part of the Dulwich College International network, we are able to offer students opportunities that a single school would not have the capacity to provide. Some of these opportunities, such as the Dulwich Festival of Music and the Dulwich Science Art Photography Competition, focus on a single artistic discipline, while others, like the Diversity series and the MADD Festival, are broad ranging. The group has also cultivated collaborative relationships and partnerships with top educational and artistic institutions throughout the world, offering students direct access and exposure to creative industries, while developing transferable skills that will prepare them for life after Dulwich.

Our Sports



Scan to learn more



Sports are an essential part of the curriculum at Dulwich College International (DCI) schools. Engagement in sports not only aids our students' physical development, improving their coordination and developing their skills in a variety of sports, but also helps them to learn how to be part of a team. Research also points to the role that regular physical exercise plays in enhancing social, emotional and organisational skills.

Through sporting competition and participation, we also encourage leadership and emphasise the importance of sportsmanship. We believe it is important for our students to experience and celebrate success and, equally, to learn how to lose with grace.

Students from our schools compete against others across the DCI family of schools in the Dulwich Games each year. In April 2015, we held the first Dulwich Olympiad, a large-scale sports competition among our schools that will take place every four years. Our founding school in London, Dulwich College, hosted the Dulwich Olympiad in 2019, when students from all DCI schools had the opportunity to participate in the founding school's quadricentennial celebrations.

Our students also participate in a number of prestigious sporting events with other international schools from around Asia and have the opportunity to travel with their teams to compete. We host a number of sporting competitions each year through our membership in regional school associations.

Our Co-Curricular Activities



Students at Dulwich College Shanghai Puxi have abundant opportunities to explore their creativity, pursue their interests and satisfy their intellectual curiosity outside the classroom. Starting at Year 1 through to Senior School, all students are encouraged to take advantage of the Co-Curricular Activities (CCAs) available at the College, to learn and develop new skills or devote time to an interest.

Co-curricular activities are offered each day of the week, with dedicated school bus services running before and after CCAs most days. CCAs are offered covering a wide range of disciplines, from Sports and The Arts through to music, science and board games. We value the CCAs as more than just additional opportunities for students to have fun. They should stimulate, excite and extend children’s learning, helping them to take their existing passions to a deeper level, and to discover new areas of interest throughout the year.

Hosted by both Dulwich College Shanghai Puxi staff and external providers, the CCA programme continues to offer broader choice for our students to explore their passions, regardless of the current skill level.

Examples of Co-Curricular Activities currently on offer include;

Sports	Performing Arts	Music	Team Challenges
Football	Ballet	Music Theory ABRSM	Lego Club
Fencing	Jazz Dance	ABRSM Aural	Origami Club
Swim Club	Hip-hop	ABRSM Scale Violin	Craft Club
Floorball	LAMDA – Acting	Orchestra	Art Attack
Taekwondo	LAMDA – Public Speaking	Drumming	STEAM Art
Skateboard-ing	LAMDA – Musical Theatre	ABRSM Scale Cello	Aviation
Basketball		Group Singing	Mini Cooking Club
Kayaking		ABRSM Accompa-niment	Gardening
Badminton		Chinese Musical Experience!	Mad Science
Netball		Forte Choir	Chess
Volleyball			Weiqi
			Board Games
			Film Club
			Japanese Club
			Mathemagics!
			Leadership
			Advanced Robotics
			Sand Painting
			Art/eco entrepre-neurs
			Stop motion anima-tion

Our Outdoor Education

“

We need the whole body

Eyes can see, ears they hear

but hands know bests how it is to touch.

Your skin knows best when somebody is close.

You need your whole body to learn.

The brain can think and maybe understand,

but your legs know best how it is to walk.

Your back will know how it feels to carry.

You need your whole body to learn.

*If we are to learn the basics about our planet Earth,
then it is not enough with words.*

*We must be able to get in close;
you need the whole body to learn.*

(Unknown author)



Outdoor Education is at the heart of everything we do at Dulwich College Shanghai Puxi. In each of the different phases of our College we foster and promote a love and appreciation of the outdoors. It is interwoven throughout all of our curriculum areas from DUCKs to Senior School. Outdoor Education activities inform a student's knowledge, which is shaped by a variety of locations; this is a pedagogical tool used by educators that contributes to learning.

Early Years

Outdoor Education and play based learning in DUCKS at Dulwich College Shanghai Puxi is an inspiring learning environment. All of the DUCKS classrooms are light-filled and spacious with easy and accessible connection to the outdoor learning environment. The indoor and outdoor classrooms are exceptionally resourced to ensure children are inspired in their learning. A huge benefit for our DUCKS children is the beautifully landscaped outdoor play areas – plentiful and perfect for explorative learning in nature – a rarity for many schools situated in Shanghai and a perfect start to outdoor education at Dulwich College Shanghai Puxi. Every year we have children experience 'The Teddy Bears' picnic on the college grounds, under the tents, or further afield. Children bring teddy bears from home and enjoy a picnic together that is previously prepared in class. There is a parent picnic to celebrate Golden Week, where parents bring in traditional Chinese food and children go to the picnic area next to the main restaurant. Last year our children from early years went to the Botanical Gardens with their parents, and investigated for signs of spring.



Primary School



The Primary School academic experience is filled with Outdoor Education opportunities. These come in the form of a wide ranging and comprehensive after school Co-Curricular Activities programme, residential and environmental trips, in addition to The Dulwich International Games for Junior School students, to name just a few. In Year 2, students are introduced to the experience and delights of camping with the 'annual Dulwich College sleepover'. Year 2 students complete a range of activities in school and

camp out overnight on the playing pitches. In Year 3, students travel further afield to places like Nanbeihu and Chongming Island for week long residential trips that are filled with a range of exciting and experiential educational activities. Year 3 also visit places in and around Shanghai like the Natural History Museum. In Years 4, 5 and 6 pupils undertake a week long residential to wonderful places like Fujian province, Beijing and Qiandaohu where they learn about the culture through participatory EOTC experiences, as well as through hikes and a bike rides.

Senior School



The academic year at Dulwich College Shanghai Puxi always commences with an Outdoor Education residential trip for every student in the Senior School, our much-loved 'Challenge Week'. The week long residential for Years 7 to 11 has taken us to places all over China and beyond including Thailand. We have been to Guangxi Province, Fujian Province, Beijing, Inner Mongolia, and Sichuan Province to name just a few. During these fun filled outdoor Challenge Weeks students have taken part in water sports,

climbing, hiking, cycling and we also participate in a local community service project work, such as restoring an old Tulou in Fujian province.

The International Award programme, which is currently open to Year 10 and Year 11 students, is an important element of the Outdoors Education programme at Dulwich College Shanghai Puxi. As part of the International Award programme students

develop their skills of orienteering and map reading, personal survival, serving a community, camping and cooking in China and further afield such as Thailand. Finally, our IGCSE Geography students take part in their Geography fieldwork and coursework studies which enables them to investigate the local microclimate of the rural area around Dulwich College Shanghai Puxi and the surrounding urban environment of the Lujiazui, Finance & Trade Zone in Pudong, Shanghai.

Our Local Community and Environment Outdoor Education

Beach Cleanup

Students, teachers and members of our local community have also worked closely with Hands On Shanghai with the aim of mobilising volunteers to clean up local beaches in Shanghai, raise awareness for ocean and marine life protection, and ultimately reduce damage to the marine environment. This year members of our school community visited the local beaches of Shanghai to help protect the marine environment, enhance environmental awareness, and promote community service concept. We worked hard all day cleaning the beach of tonnes of plastic and other rubbish.



Million Tree Project

Staff and students at Dulwich College Shanghai Puxi are also heavily involved in 'The Million Tree Project'. The Million Tree Project aims to raise community awareness of the Earth's precious environment while focusing on steps individuals can take to lessen their negative impact on the natural world. The Million Tree project is designed to improve both ecological and humanitarian conditions by planting trees in Inner Mongolia to halt the expansion of desertification in the region. Every year, Dulwich College Shanghai Puxi staff travel to Inner Mongolia to plant trees with local farmers. The activities in Inner Mongolia include tree planting, pruning and visiting the desert. It is such a positive worthwhile experience for all and we look forward to the trip again next year.



We are very proud of our Outdoor Education programme at Dulwich College Shanghai Puxi and we will continue to learn from and enjoy the benefits of this bespoke element of our educational philosophy.

Our Wellbeing



Wellbeing is a whole school culture which ensures that every member of the community can flourish. In developing the skills and character strengths that enhance wellbeing, our ultimate goal is to contribute positively to the wider community with meaning and purpose.

It is increasingly clear that in order to be fulfilled, successful and purposeful in life and work, we had to develop a wide range of holistic character strengths and skills to embed in schools. The Dulwich College International framework below provides the best mechanism to capture the diverse requirements of a Wellbeing agenda articulated through both the taught curriculum and co-curricular programmes across schools at any age or stage of development. Dulwich College International has adapted the IB's Approaches to Learning (ATL) framework for this purpose and the language can be revised as we move forward in our own particular contexts. Additionally, the character strengths and skills' domains, clusters and descriptors can be regularly revisited to ensure they are meeting the needs of our community.

By providing students and families with integrated and holistic support systems that focus on all areas of individual development, ability and interests, underpinned by the framework below, our students are provided with a supportive environment of mutual care and concern from all staff members.



Our Safeguarding



Scan to learn more



Because we put students first in all that we do, safeguarding and child protection are of paramount importance Dulwich College Shanghai Puxi. As a world-class organisation with a strong moral purpose, we make certain that every step is taken to ensure the safety and wellbeing of each child in our care.

We believe that children should be respected and their views should be heard. It is our responsibility to ensure that each child forms stable relationships with adults, built on trust and consistent support for children's individual needs. This approach guides the behaviour of all professionals in our school. Our child-centred approach to safeguarding is based on the United Nations Convention on the Rights of the Child.

Dulwich College International has developed an extensive Safeguarding Policy and training programme, which is regularly reviewed and updated. All new staff members at our school are subject to our safer recruitment procedures, in which all staff involved in recruiting are trained, and on arriving at our school they all take part in safeguarding training, which is periodically refreshed throughout their tenure in our organisation. Our students have age-appropriate lessons in safeguarding and our schools undergo annual safeguarding audits. Safeguarding is also a critical component of our accreditations.

Our House System



Each year, our new students take part in a very special House Sorting Ceremony. For our younger students this involves making their way onto stage and being sorted into their House by our very own Dulwich College Shanghai Puxi sorting hat. For our Senior School students, in reflection of their age and maturity, the sorting process takes place through their annual House Banquet, where House Captains pass the reigns on to the next group of leaders, and new students are welcomed into their Houses by their House colleagues.

The House system goes deeper than just putting on the House colours and enjoying the special sorting ceremony though. Being part of a House fosters a sense of belonging and contributes to their personal development in many different ways.

The House system provides a wide range of enrichment opportunities for students to take part in: from sports events to chess tournaments and from talent shows to quizzes. Universities are looking for students who get involved. The House system promotes a culture of participation and friendly competition. Through House competitions, student experience both victory and defeat. play to win but learn to lose. These are valuable lessons for life.

The House system creates a range of leadership opportunities for our students. From formal positions such House Captain to specific roles such as event organiser or team captain, students are empowered to exercise voice, choice and ownership. They gain experience of taking responsibility and being accountable as well as the satisfaction of making a difference. Through these experiences our student leaders develop into great role models for their younger peers, inspiring them to become the next generation of leaders.

We are preparing our students to Graduate Worldwide. Our Houses celebrate our international mindset and reflect our commitment to diversity, equity and inclusion.



Our University Pathways



“

Our students not only receive personalised guidance from university counsellors at their school, but also benefit from support that comes from having experienced counsellors with diverse backgrounds and area-specialties sharing best practice throughout the Dulwich College International network of schools.



Scan to learn more

The student journey is unique for every family and individual, which is why Wellbeing and Guidance at Dulwich College International is at the core of everything we do, and is crucial to supporting a robust university counselling programme. We believe that student success inside and outside of the classroom is rooted in a student’s ability to exhibit resilience and flexibility in an ever-changing world. We offer a holistic, student-centered approach to guidance and wellbeing to all students from Early Years throughout Senior School. All students engage in the Dulwich College Success Plan, a developmentally appropriate, personal enrichment curriculum that encompasses all areas of student development and self-discovery. We provide students with countless opportunities for academic, extracurricular and personal growth and reflection, resulting in the creation of personal learner profiles that are updated and reviewed on a regular basis, providing insightful understanding of every student at every level. Such insight provides our educators with pertinent information needed to support students in setting goals and making sound decisions throughout their journeys.

When students are introduced to our unique university and careers counselling programme, insights and unique information from students’ personal learner profiles is used to support students in continued self-understanding in Year 7 before shifting focus to university and career research in Year 10. Therein, students are guided in understanding popular university systems throughout the world, in the creation of personal essays and resumes and through the application process. Additionally, students are taught how to evaluate and research a university’s ethos, values, curriculum and faculty to demonstrate informed interest and ensure best fit for our students and families. By building a philosophy of self-confidence and self-awareness that starts early on, our programme ensures students are in a position to realise well-informed dreams and leave Dulwich university-ready and worldwide.

Our students not only receive personalised guidance from university counsellors at their school, but also benefit from support that comes from having experienced counsellors with diverse backgrounds and area-specialties sharing best practice throughout the Dulwich College International network of schools. Many of our counsellors serve on the International ACAC (Association for College Admission Counseling), working on committees alongside university representatives and admissions officers. Through this our university counsellors are able to leverage the Dulwich name and network to lead global sessions for professional learning and development around the world.

Dulwich College International

University Pathways



King's College London



University of the Arts London



Royal College of Music



University of Cambridge



Imperial College London



McGill University



University of Toronto

McGill University



Harvard University



Yale University



University of Washington



University of Oxford

Erasmus
University
Rotterdam



Erasmus University College



Ecole Polytechnique



The Hong Kong University of Science and Technology



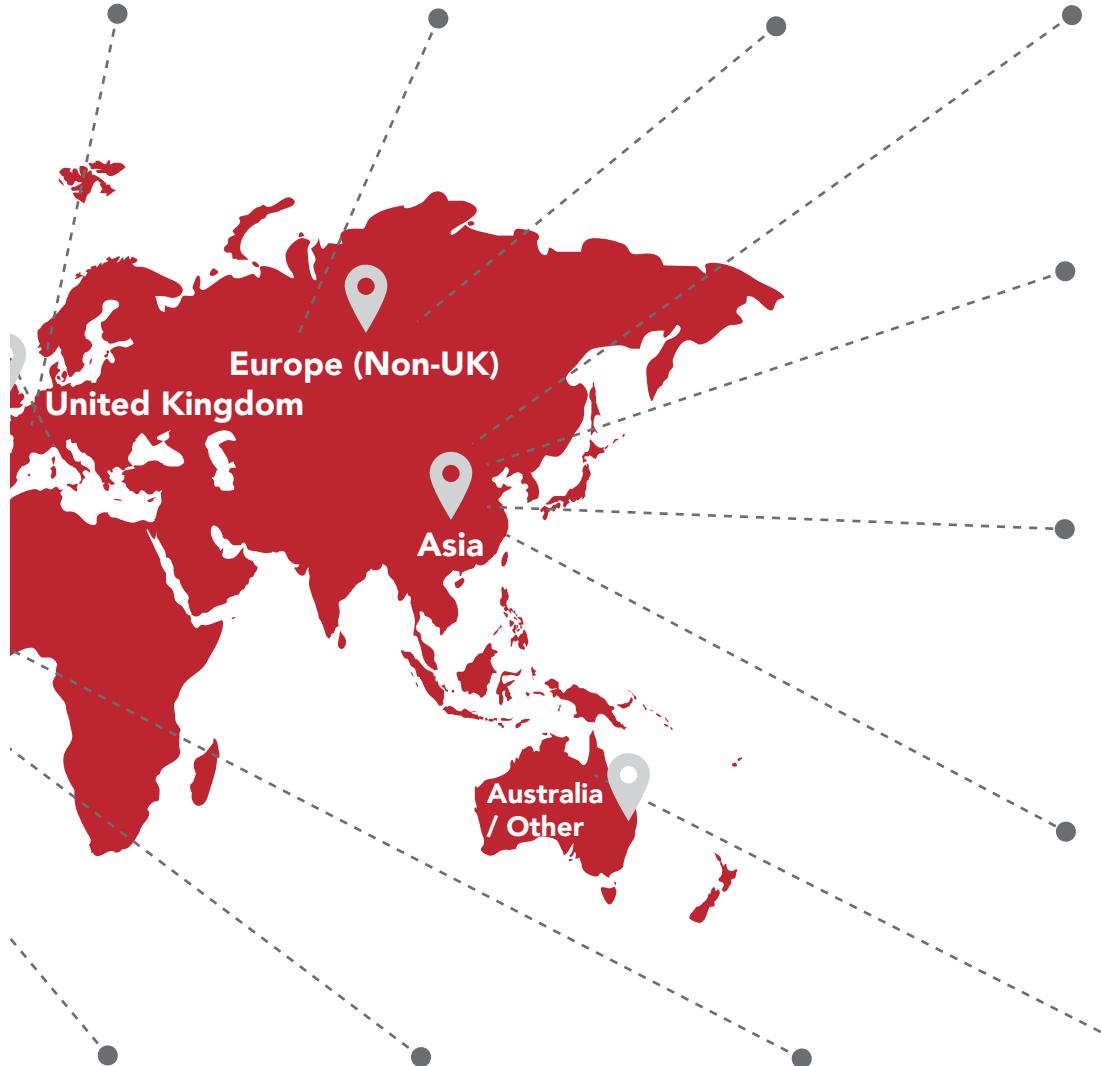
The University of Hong Kong



Tsinghua University



Yonsei University



Stanford University



Brown University



Art Center College of Design



The University of Melbourne



The Worldwide Alumni Network



The Worldwide Alumni Network brings our alumni from across our family of schools together on one platform. Co-created by alumni, the Worldwide Alumni Network aims to bring our alumni from across our family of schools together, and to build bridges for them to develop themselves personally and professionally, connect, re-connect and socialise with other alumni across our family of schools, and pioneer positive change - in industry, society, and the global community.

‘One Family of Schools’ is a guiding ethos for Dulwich College International. This means that our students are not only connected to peers in their own schools but also across borders to the broader Dulwich network of schools. It is vital to us that this interconnectedness extends through to our alumni network. This is what will provide our alumni the strongest possible social and professional networks throughout each phase of their lives, at a truly global scale.

We want all of our students to always feel that they are a part of the Dulwich family. Worldwide Alumni are therefore any former students of a Dulwich College International or Dehong school who are 18 years and older, and no longer in secondary education.

Alumni are invited to join our official Worldwide Alumni Network engagement platform for regular news and updates from the group, to connect with each other, and to find professional development opportunities. We run regular events through out the world, in places such as New York City, Toronto, London, Amsterdam, Shanghai, Seoul and Hong Kong. Our alumni also share networking opportunities with the Old Alleynians alumni network at Dulwich College in London.



Scan to learn more

Our Teachers

“

At Dulwich College Shanghai Puxi we go to extraordinary lengths to seek out, hire and retain the very best educators from around the world. We leverage the wide network of resources afforded us through our family of schools, and travel to job fairs across the globe. We retain our incredible teachers by providing a warm, welcoming community, world-class remuneration and benefits, and ongoing learning opportunities that ensure that every member of staff feels valued.



Scan to learn more



Our Community

Friends of Dulwich is an integral and supportive part of our school community. All parents and staff are members of the Friends of Dulwich and many parents choose to become active in the organisation. Parents can choose to serve on the Friends of Dulwich Committee, take part in social activities, or volunteer to help with the many charitable events sponsored by Friends of Dulwich.

Friends of Dulwich welcome new families to the College and offer significant support to families settling into life at the College and in Shanghai.



Our Campus

Dulwich College Shanghai Puxi enjoys a 40,000 square metre, purpose built, state-of-the-art campus set upon green land in South Minhang on the Puxi side of Shanghai. The College has been built to exceptional standards, to ensure that our students are educated safely and inspired by the natural, green environment.

Complementing our light-filled and generously laid out classrooms are natural garden settings for outdoor play and exploration. All of our students swim weekly in our 50m



Olympic sized swimming pool. There is a smaller training pool alongside this for our Toddler and Nursery aged students to build their water confidence. A multitude of sports are played indoors, in our 2000 square meter, fully air-filtered, triple gymnasium and outside, students enjoy team sports on our all-grass football and rugby pitch.

Students enjoy weekly assemblies, theatrical performances and music ensembles in our 500 seat theatre, blackbox theatre spaces, orchestra room and outdoor amphitheatre space.

Creativity and learning further flourishes through the use of our film studio, editing suite, green room, IT and science labs, robotics and Lego spaces, and 3 libraries.

The Dulwich College Shanghai Puxi campus enables us to deliver a world-class holistic education in facilities that many schools could only wish for.

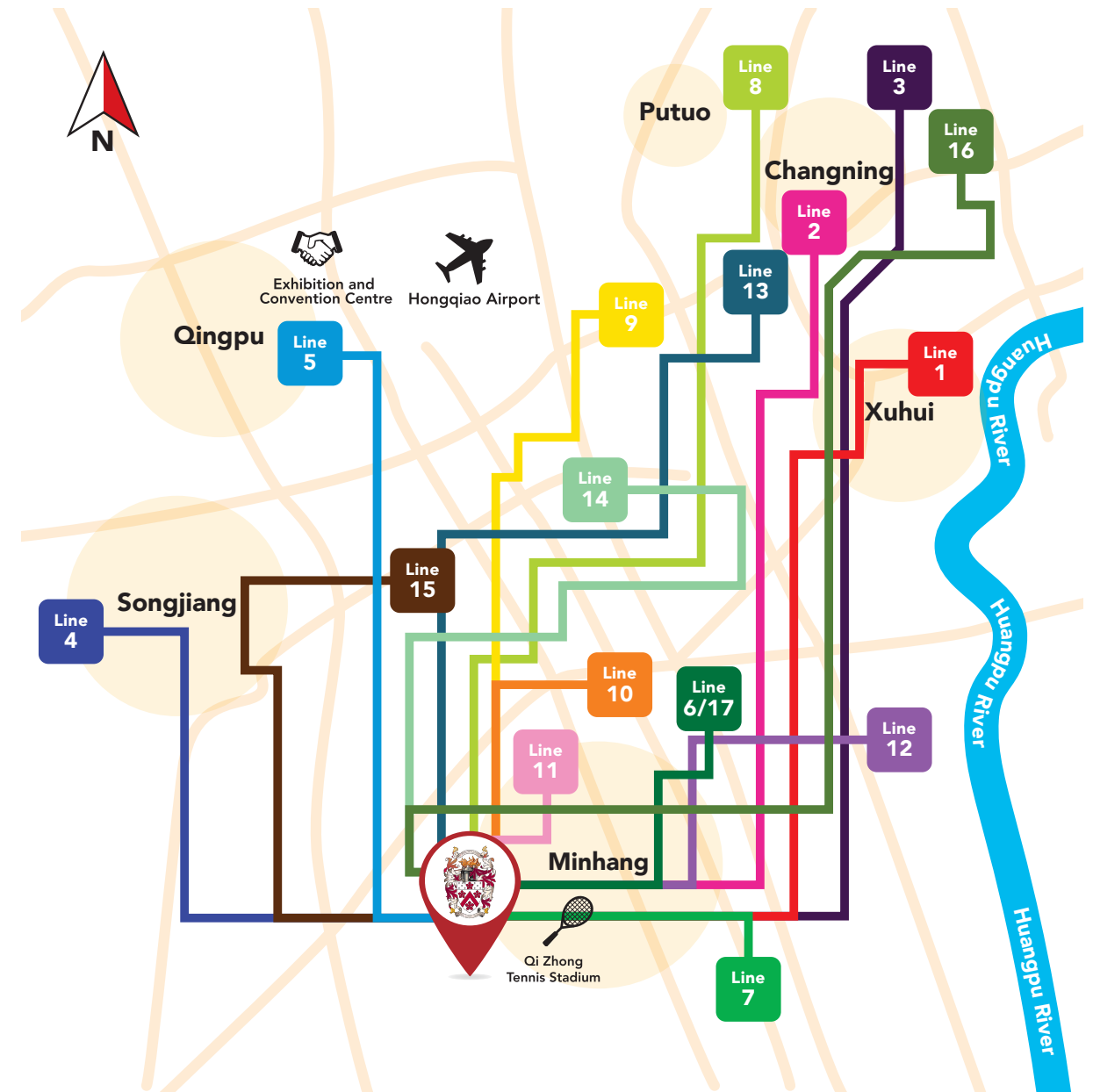


Our School Buses

While Shanghai is large, getting to Dulwich College Shanghai Puxi is simple. Many families choose our school bus network for its broad scope and flexible routes which provide near door-to-door service throughout much of Shanghai.

Distance can be deceiving. Our location allows us to enjoy a green, nature-filled environment where students regularly encounter wildlife and the songs of birds fill the sky. Yet most of the popular residential locations in inner-west Shanghai are within 45 minutes of the school via our school bus network.

Our mostly electric bus fleet glides throughout Shanghai collecting our eager pupils, who socialise, read and relax to and from school. Offering buses both before and after our CCA programme allows our families to enjoy the full benefits of life at Dulwich College Shanghai Puxi, while also providing flexibility of drop-off times.



Joining Our Community

“

*Thank you for your interest
Dulwich College Shanghai
Puxi.*

*I encourage you to explore our
website and this prospectus
in order to gain a better
understanding of what a
Dulwich education can offer your family. However, the best way
to experience our wonderful school is to see it first hand. I invite
you to connect with us and book a time for a personalised tour. I
look forward to learning about your family and exploring the fit
between our College values and your aspirations for your child.*



Wonnie Sayama

Director of Admissions

Being an international school catering for students from around the world, Dulwich College Shanghai Puxi operates on a rolling admissions schedule, accepting applications throughout the academic year. While we encourage students to begin their learning journey with the College at key times throughout the year coinciding with term starts, we do acknowledge that each family is unique, and we therefore can facilitate admissions discussions year-round.

Our College is academically selective and follows an enhanced British curriculum adapted for the needs of our international student body. We seek to enrol those students and families who adhere to our College values, to;

**Aim High
Work Hard
Be Kind and Respectful
Make a Difference**

Students who embark on a learning journey at the College should share a sense of excitement about these values and approach their education with enthusiasm and a desire to take advantage of the full opportunities that they will be provided during their time at the College.

Students wishing to enrol in the College must hold a foreign passport or foreign birth certificate. Alternatively, if one or both parent(s) hold foreign passport(s), the child is eligible to apply. Where both parents are PRC Nationals, they must provide a waiver letter from the Shanghai Municipal Education Commission giving permission to the student to attend Dulwich College Shanghai Puxi.

We always encourage prospective families to attend a campus tour where possible. If you would like to communicate directly with the Admissions team to either ask a question or schedule a personalised campus tour, this can be facilitated through our dedicated Admissions WeChat account.

Scan the QR code below to connect with our Admissions team:



Alternatively email admissions.shanghaipuxi@dulwich.org or call 21-33299310

We look forward to hearing from you. Joining Dulwich College Shanghai Puxi may be the most inspiring choice you can make for your family.



Contact Us

Dulwich College Shanghai Puxi

admissions.shanghaipuxi@dulwich.org

(+86) 21 3329 9310

2000 Qianpujing Road, Maqiao, Minhang.

