



DULWICH COLLEGE

| BEIJING |

北京德威英国国际学校

PROSPECTUS

LIVE **WORLDWISE**.™



WELCOME FROM HEAD OF COLLEGE



Welcome to Dulwich College Beijing where our students learn to be their best as they navigate this changing, complex world, and our Mission to 'Live Worldwide' guides us every single day. The College is a special place for the students who attend, the teachers and staff, and the whole community.

Dulwich College Beijing has built a long history of excellence in international education embedded in British traditions. As a member school of the Dulwich College International family, we draw upon over 400 years of tradition and experience from our founding College in London.

At Dulwich College Beijing, we are committed to delivering programmes that help our students to grow as learners and as people, in a positive and caring environment. At the College, students come first and we are therefore committed to keeping our children safe and protected both in an off-line and online environment. We aim to ensure that all of our safeguarding policies and procedures are alive and embedded in everything we do. Our College values a family atmosphere where students, teachers, and parents work together to share a sense of community. We know that positive student-teacher relationships are key for individuals to reach their full potential, and our teachers are committed to supporting not only student learning but also student wellbeing.

Our rigorous academic curriculum is complemented by a balanced programme that includes a range of opportunities for students to excel outside the classroom. Alongside academic excellence, students show passion through artistic pursuits, in the sporting arena and make a difference to others through ongoing service-learning projects. We want our students to have the knowledge, skills, and motivation to make a difference to people, society, and the planet, and character and values are integral to how we educate them. Our values of resilience, confidence, respect, integrity, responsibility, open-mindedness, and kindness are what we model and expect in our students, and we know that these dispositions will enable our students to navigate their world today and hold them in good stead for their future.

At Dulwich College Beijing, the partnership between the College and parents is very much valued. We work closely with parents based on their individual needs as well as with our parent association, Friends of Dulwich, on the needs of our parent community. To this end, regular communication and feedback are the cornerstones of our relationship with the parent community.

If you would like more information, we shall be delighted to help you discover the benefits the Dulwich College Beijing education provides to our students.

Yours sincerely,

Anthony Coles
Head of College

OUR HISTORY

Dulwich College Beijing finds its roots in the double heritage from Dulwich College London and Dulwich College International, thus building its own history on solid foundations of educational innovation and pioneering spirit.

Dulwich College London, our founding school, was founded over 400 years ago in 1619 by renowned Elizabethan and Jacobean actor Edward Alleyn. At the age of 47 and with letters patent from King James I, he decided to establish a school that would give his first students the opportunity and invaluable gift of combining academic excellence with strong artistic and social manners. The school flourished and today is one of the UK's most prestigious independent schools, attracting students from the top 15% of the UK academic range. The legacy of educational balance is one of the cornerstones of the Dulwich ethos and philosophy.

Dulwich is recognised as a pioneer in education. It introduced the Modern Curriculum in the 1880s and was one of the first schools in the UK to introduce Mandarin Chinese into the curriculum. In 1996, it became the first British independent school to open a campus in Asia.

Over three centuries later, the same entrepreneurship and pioneering spirit resulted in the creation of Dulwich College International when founders Fraser White and Karen Yung first exported the Dulwich vision and spirit to the East upon settling in Shanghai in 2003.

The dynamic partnership between Dulwich College in London and Education in Motion aims to establish the Dulwich College vision in Asia and further afield by bringing the best education to students around the world.

The College has produced leading scientists, actors, film directors, musicians, sportsmen and writers, a number of whom have visited Education in Motion (EiM) schools to talk of their experiences. To learn more about EiM and our founding school, visit their respective websites www.eimglobal.com and www.dulwich.org.uk



OUR COLLEGE

DCB AT GLANCE

Year Founded: 2005

Student Population: 1,570+

Number of Nationalities: 30+

Age Range: 3-18

Average IB score: 37.1 (Class of 2023 IB average vs world average of 30.24)

GOVERNANCE

The College is divided into three sub-schools: DUCKS for students aged 3-7 (Nursery to Year 2); Junior School for students aged 7-11 (Year 3-6), and Senior School for students aged 11- 18 (Year 7-13). Each school is run on a day to day basis by a Head of School who reports to the Head of College. There are middle leadership teams within each school as well as responsibility posts for some whole College departments. The Head of College, three Heads of School, the Director of Business Administration, the Director of Government Relations and Public Affairs, the Director of Admissions and Marketing and the Director of Communications make up the College Leadership Team.

AWARDS



- 2022 International School Awards for "Pathways to continued and University Education"
- 2021 British Schools Award for "Holistic Education" and "Science and Technology"
- 2019 International School Award for "Creativity in Learning"
- 2017 British International School Award "Teaching Initiative of the Year"
- 2017 Diplomats' Choice Award "Best International School"
- 2017 Corporate Social Responsibility Award
- 2016 Expat Life Awards "Best International School"
- 2011 Independent School Awards "British International School of the Year"

OUR GUIDING STATEMENTS

Our guiding statements provide the College with the compass in which to base our decision-making.

MISSION

LIVE
WORLDWISE.™

VISION

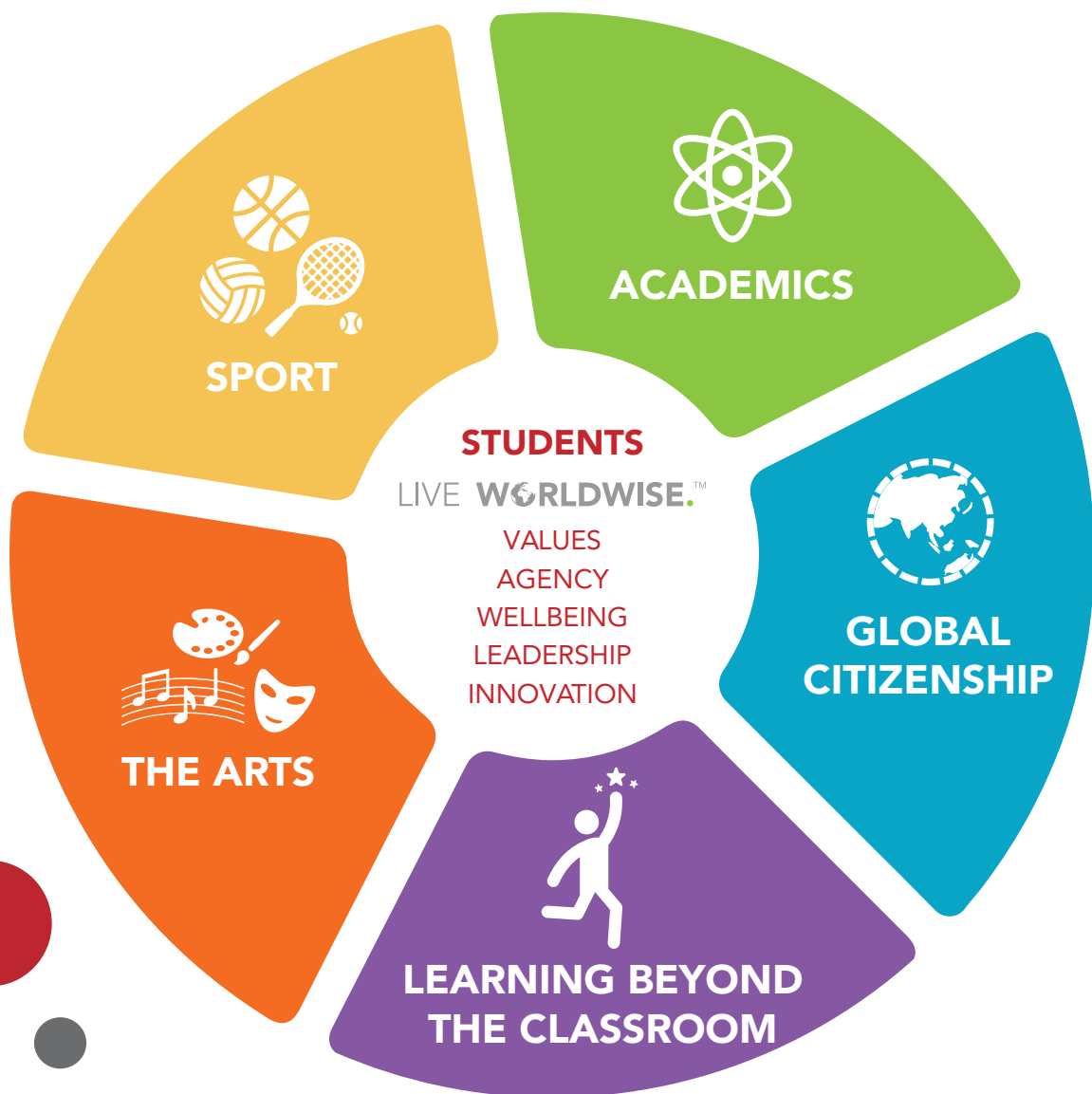
We have the knowledge, skills and motivation to make a positive difference to people, society and the planet.



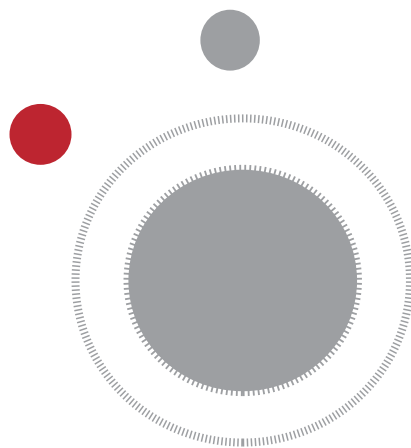
Please visit our website for the DCB Guiding Statements Evaluation Report of the 2020-2021 Academic Year: [Dulwich College Beijing 2020-2021 Guiding Statements report | Beijing](#)

OUR EDUCATIONAL PILLARS

At Dulwich College Beijing, we believe that 'students come first'. Therefore, students are placed in the centre of our holistic approach with an emphasis on the growth of each student. The five pillars form the holistic educational experience that we deliver to our students. This broad and balanced educational experience empower students to 'Live Worldwide'. Our mission also asks us to help students grow as global citizens. This directs the educational programmes we offer along with how we help students with their character development.



We are proud of our students' outstanding academic success but equally, we believe that our extensive enrichment programmes are vitally important in providing our students with the very best experiences, which will shape their futures. Students participate in sports, music, drama, art, service, debate and more. They are given the opportunity to collaborate with their peers at DCB and across the Dulwich family of schools. Many of our extra-curricular activities are led by students. Their leadership is authentic and far reaching, with numerous student initiatives aiming for greater social impact. As students graduate from DCB, we are confident that the values we have nurtured will enable them to make a positive difference in the world.





STUDENT SUPPORT AND WELLBEING

Dulwich College Beijing has a multi-disciplinary team of professionals to support our students throughout their journey across the College. The team includes Learning Support Teachers, English as an Additional Language Teachers, Social and Emotional Counsellors, University and Careers Counselling and an onsite Nursing Team staffed by trained medical professionals from United Family Hospital. Students are also supported by an intricate network of Classroom Teachers, Form Tutors, Year Leaders and Key Stage Leaders.

Our aim is to support our students in the most effective and least intrusive way possible. This can be through one-to-one basis, small group sessions or within the classroom context. We seek to enable students to thrive through their own personalised pathways.

Wellbeing is at the heart of all we do and is built into the curriculum as are a variety of physical education, drama and music classes to keep students moving and allow them to express themselves through different mediums. From DUCKS, every student belongs to a House, which is the basis of the guidance and welfare system that enables us to take personal care of each student and at the same time, creates a sense of belonging. Many students have mentors from older year groups, and strong links to the community beyond the school gates mean that our students maintain a broad and compassionate outlook.



SUSTAINABILITY AND GLOBAL CITIZENSHIP

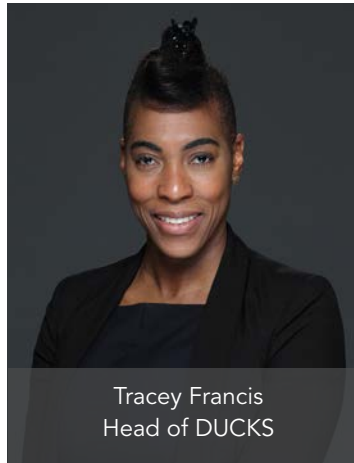
We are shaping our students to be global citizens of the future and guide them on their journey to connect with, care about and act for people, society and the planet.

As an upstanding international school, Dulwich College Beijing has pledged to play its part in the world's collective responsibilities towards Sustainability. Much more than recycling, this pledge requires us to work towards the United Nations Sustainable Development Goals for the year 2030 each and every day.



Our goal is to encourage our community to make informed choices, take inspired action and create a positive impact as individuals, as a group and at a global level. As such, sustainability and global citizenship are embedded in our curriculum and operations across our whole organization.





Tracey Francis
Head of DUCKS

DUCKS



DUCKS Beijing is a dual language infant school that offers children a wealth of learning experiences within the security of a translanguaging environment. We establish the foundations for lifelong learning ensuring our children are on the path to be truly global citizens that will make a difference.

Our inquiry-based approach to learning uses the Early Years Foundation Stage Framework and the English National Curriculum standards as the progressive spine for an enhanced conceptual framework of units of investigation. The development of 21st century skills and deep understanding are key features of our purposeful approach.

Our setting nurtures holistic development. We are highly aspirational about our children's outcomes. Wellbeing and a sense of self are essential to happy and confident individuals who will seek to explore their own interests. Our creative provision spans across the indoor and outdoor environments and enables children to take risks and develop independence. It provokes curiosity and an excitement to learn.

Our school community puts students first. We use values-based approaches in our interactions, behaviours, systems, and decision making. We aim to cultivate our unique differences to build a sense of belonging.





Jacynth Gurdon
Head of Junior School

JUNIOR SCHOOL



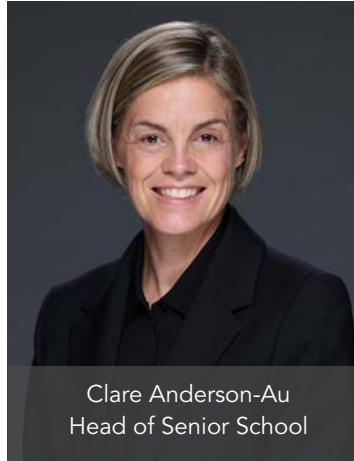
In Junior School (Key Stage 2, Years 3 to 6), we believe that each and every child has the right to be heard and the potential to bring something unique to the world in which they live. In a safe, secure and stimulating environment, our students are able to thrive, both personally and academically, and it shows. Visitors to a DCB Junior School classroom or assembly are often struck by the children's enthusiasm and level of engagement. A primary teacher's role is to help students fulfil their potential in all areas, irrespective of cultural or educational background.

Education only flourishes if it successfully adapts to the demands and needs of the time, and learning is especially effective when it is personalised and relational. Given our international setting in China's capital, Beijing, students study an enhanced English National Curriculum, with cross-curricular units that reflect students' interests and at the same time, put into international as well as local contexts. Our approach aims to build a thirst for knowledge in both students and staff.

Junior School students are taught English, mathematics, science, humanities, culture and wellbeing by their class teacher. Specialist teachers lead AEN, ES, Mandarin, Art and Design, PE and Sport and Music classes. A strong number of well qualified and highly experienced assistant teachers work seamlessly alongside class and specialist teachers.

A myriad of extra-curricular activities enriches learning for the students and enhances both hard and soft skills. Students participate in sports, music, drama, art, tech, community service and more, with continuous opportunities to develop confidence and leadership skills, which will take them, well prepared, to the next step of their education in Senior School.





Clare Anderson-Au
Head of Senior School

SENIOR SCHOOL



At DCB Senior School, we believe all staff have a pastoral responsibility, essential in supporting students as they strive to achieve their personal best and become confident, independent and compassionate young people. Surveys consistently reveal that our students feel valued and have a strong sense of belonging.

Each student belongs to a tutor group and are supported by tutors, year leaders, social and emotional counsellors, university counsellors, Heads of Key Stage, and the Senior School Leadership Team. Our teachers are subject specialists, focused on best practice, dedicated to both supporting and challenging students. This challenge and rigour starts with the enhanced English National Curriculum for students in Key Stage 3 (Years 7, 8, 9), characterised by a skills-based curriculum and assessment model. Our IGCSE programme in Key Stage 4 (Years 10 and 11) provides students with both breadth and depth of study. In addition, we have developed our own liberal arts course and an award-winning STEM programme as further options. In Key Stage 5 (Years 12 and 13), all students study the IB Diploma Programme with a broad range of subjects offered and a thriving service programme.



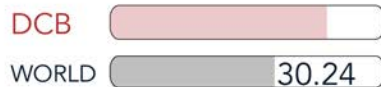
ACADEMIC EXCELLENCE



A spectacular IBDP 2023 performance!

AVERAGE POINTS
(OUT OF 45)

37.1



PERFECT SCORES

2



RESULTS ABOVE 40

39%

4 received 44 points
8 received 43 points



STUDENTS RECEIVED
THE FULL IB DIPLOMA

83



BILINGUAL DIPLOMAS

36%



PASS RATE

99%

满分

STUDENTS RECEIVING GRADES
OF PERFECT 7 IN MANDARIN

4



SUBJECT GRADES OF PERFECT 7

Physics: **52%**
History: **57%**
Economics: **50%**
Spanish ab initio **48%**
Chemistry: **38%**
Global Politics **43%**
Mathematics: **32%**

OUR CAMPUS

The design of our campus revolves around three main focal points to support our holistic learning philosophy – a green, sustainable environment, an open and conducive learning community and a reflection of shared values of our community and culture. We offer an educational environment designed to nurture the intellectual, social and emotional development of our students.

Our world-class facilities include a state-of-the-art STEAM & entrepreneurship hub SE21, the driving force behind interdisciplinary and enterprise learning. Other facilities include two air-filtered sports domes, a multi-purpose sports hall, six tennis courts, a weight room, dance studio, a FIFA two-star-rated football pitch, a rugby pitch certified by the International Rugby Board, a cricket pitch and an astroturf sports pitch, and a swimming pool. The school building houses two large theatres with 755 seats combined, two black box theatres, three spacious music rooms, seven practice rooms, two ICT suites including one dedicated to music, a professional green screen film studio, five light and airy art rooms, DUCKS kitchen and art room, three libraries, 10 well-equipped science laboratories, and well-lit classrooms with MaxHubs. DCB is a wireless campus supporting our 1:1 laptop programme from Year 3 onwards.











SCAN TO FOLLOW US



89, Capital Airport Road Shunyi District, Beijing
Tel: +86 (10) 6454 9000
beijing.dulwich.org